



***Dead Deer
Wildlife Surveillance
Systems, LLC***



**Modification Instructions
For The Digital Concepts 2.1 MP**

April 26, 2005

Copyright 2005 Dead Deer Wildlife Surveillance Systems, LLC, All Rights Reserved

These instructions are for the modifications required to use the Digital Concepts 2.1 MegaPixel camera in a motion activated game and trail camera using products from Dead Deer Wildlife Surveillance Systems, LLC

WARNING performing these modifications will void your camera's warranty. In addition there is a risk you could render your camera unusable. Use of these instructions is at the user's risk and Dead Deer Wildlife Surveillance Systems, LLC accepts no responsibility for damages or injury arising from the use of these instructions.

Remove all batteries and media cards from the camera.

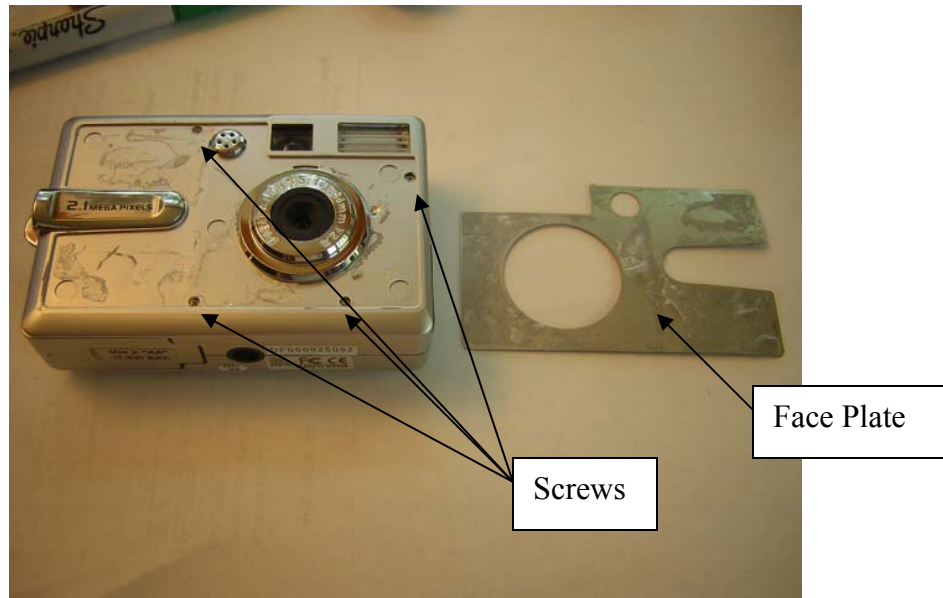
Step 1 Opening the camera

The first step in opening the camera is to remove the face plate that covers the screws. To do this you will need a small flat head screw driver or other tool which you may use to pry the metal face plate from the camera.



Face Plate

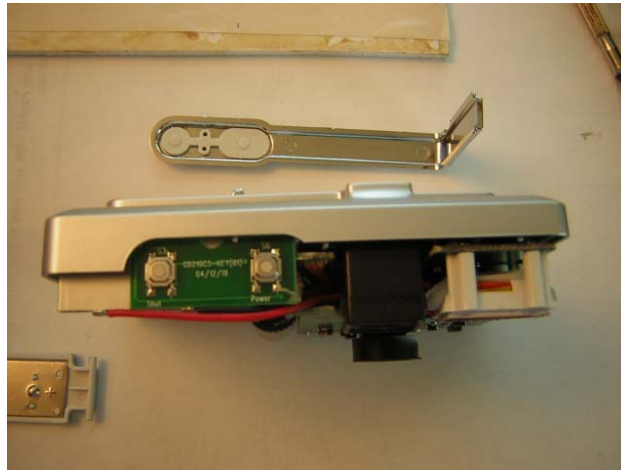
Once the face plate is removed, there are (4) small Phillips screws which must be removed.



After removal of the screws is completed, remove the face portion of the cast. There are some internal snaps molded into the case, so you may need to use a finger nail or something to assist in separating the 2 halves.



Next the shiny band that houses the On-OFF and Shutter Buttons Must be removed. This piece just clips into the back part of the case and easily separates.



Now the camera is open and may be wired.

Step 2 Wiring the camera

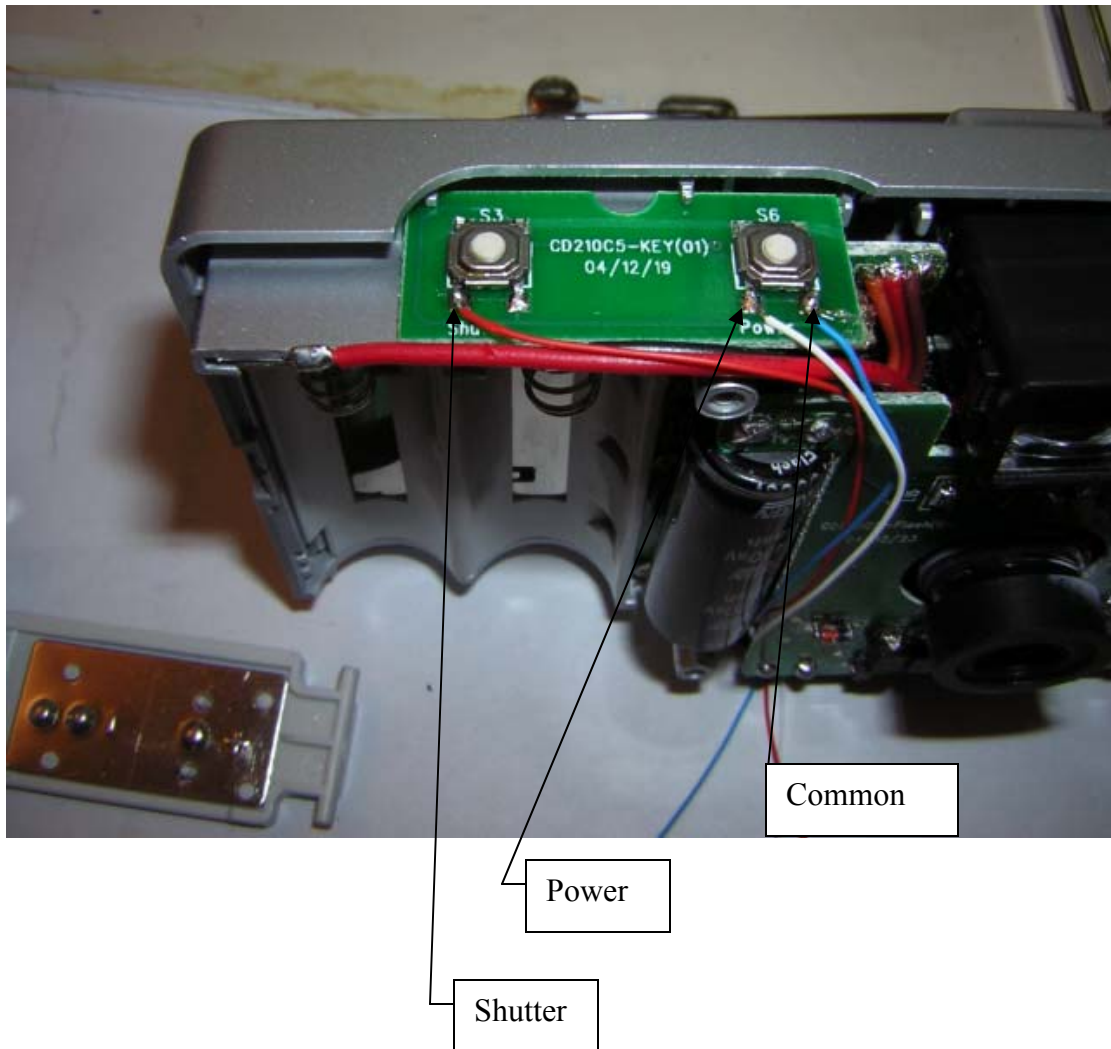
You will need (3) wires (preferably 28 to 30 gage) approximately 6" long to perform these modifications. The following are the colors and designations that we use.

Blue – Common

White – Power

Red – Shutter

Solder to the labeled contacts.



Once you have routed the wires to where you wish to exit the camera, re-assemble in reverse order. Reattachment of the face plate is not necessary, and it may be unusable depending on if it was bent during removal.



Replace all 4 screws.

Congratulations, you are finished with the camera modifications.