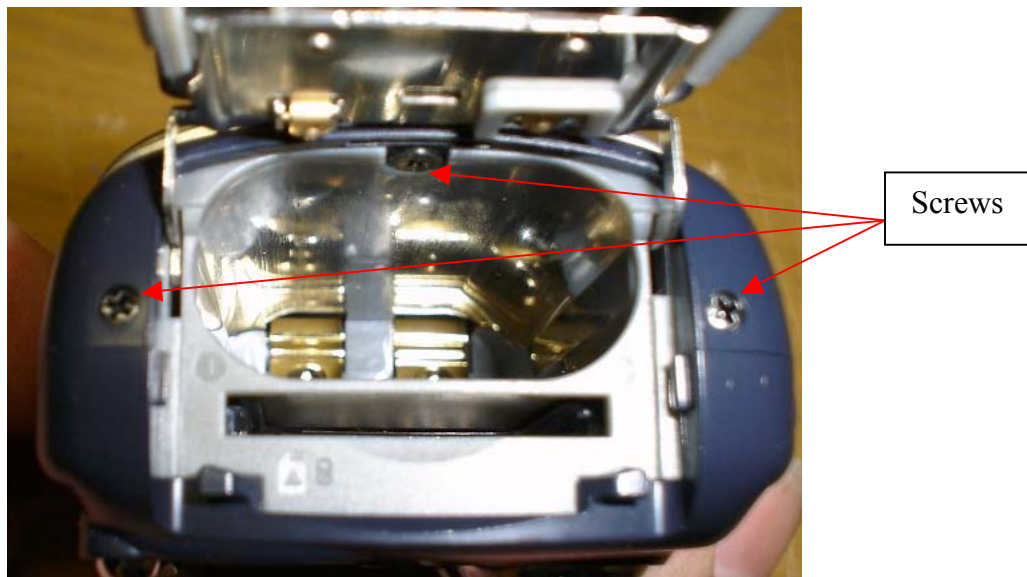


# Samsung A402 IR Mod



## **\*\*Disclaimer\*\***

This document is intended to explain how to make the necessary modifications to your Samsung A402 camera in order for it to see infer red light. By doing this modification you will be voiding your warranty and could cause damage to your camera. Trails End or I takes no responsibility for any damages caused by this mod for it is for informational purposes only.



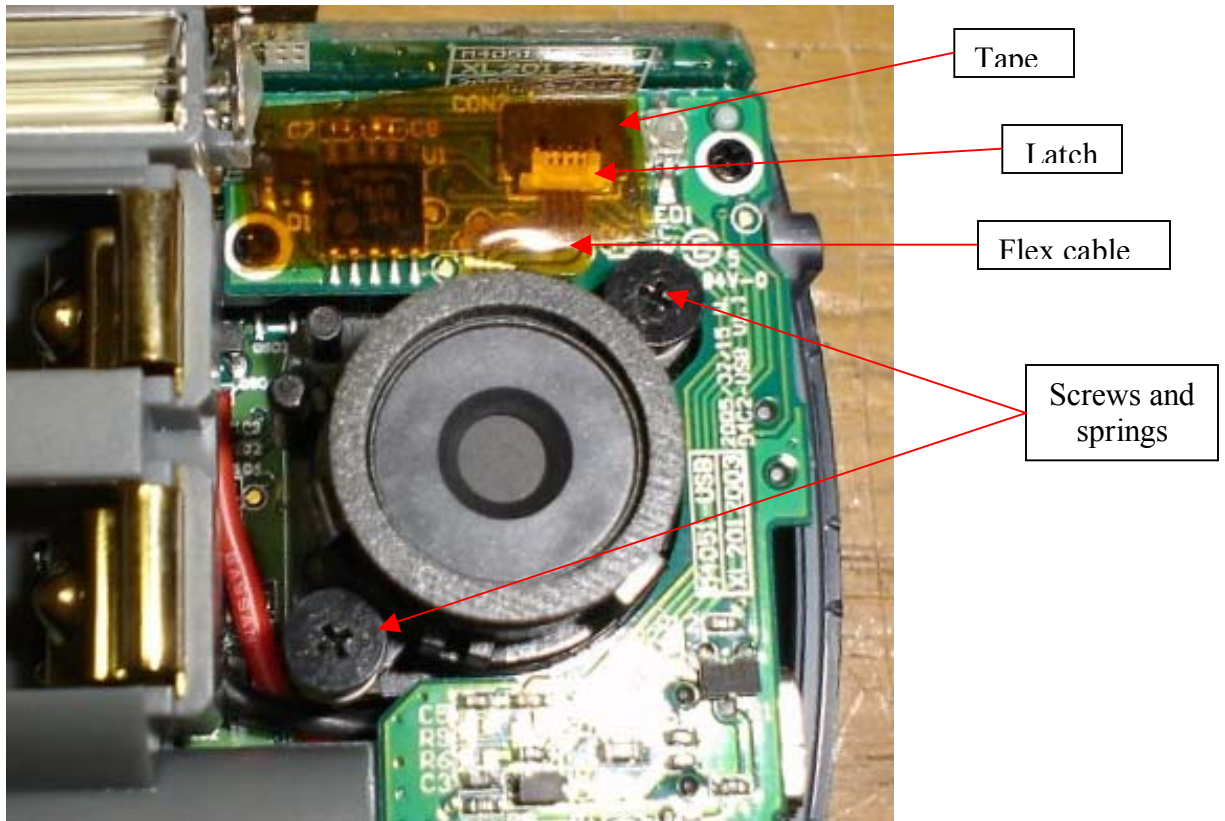
Remove batteries, memory card and 3 screws.



Next remove three screws from the bottom of the camera.



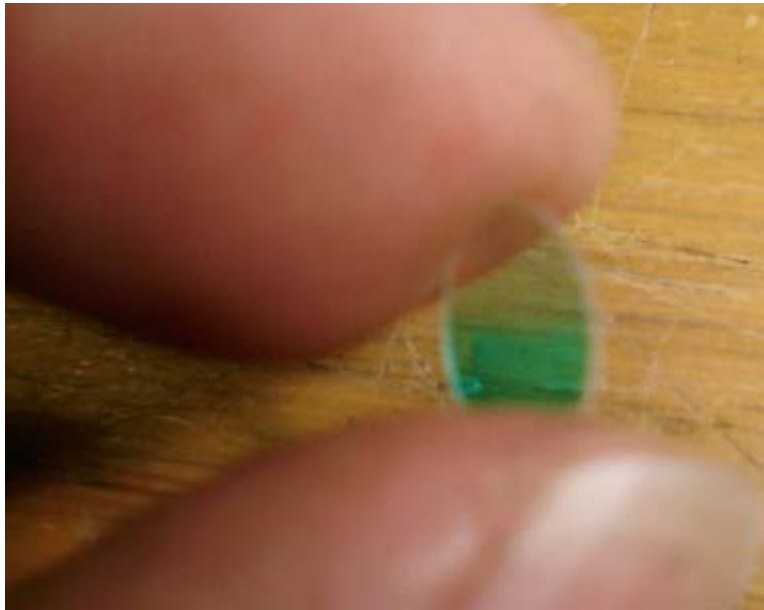
Last remove one screw on the side of the camera and open the serial port cover. With all of the screws out now you can carefully remove the front cover of the camera. There are three plastic latches on the top of the camera between the power on and shutter buttons. By running your finger nail along the seams and depressing them, it will aid in opening the camera.



Next remove the two screws and springs that hold in the lens assembly. Remove the tape that covers the latch. With the tap remove carefully lift the latch with a small screwdriver. With the latch now lifted remove the flex cable and lift lens assembly from the camera.



Next Flip the assembly over and carefully peel the tape or sticker off the back of the assembly. By using a small knife or screwdriver you will be able to lift the IR blocker from the assembly.



The glass is very small and thin so be careful when removing it so it does not break and send glass particles into your lens assembly.



Protective  
Film

Next carefully peel back the protective layer of film from both sides of the precision cut replacement glass and install. By taking a small knife blade and carefully scraping on the side of the glass you should be able to get under the film. Be very careful not to scratch the surface of the glass or leave fingerprints on any of the glass. Last secure the glass in place with either the sticker you removed or some very small pieces of tape. Now reassemble the unit and you are done.