



***Dead Deer  
Wildlife Surveillance  
Systems, LLC***



**Modification Instructions  
For The Samsung A402**

May 23, 2005

Copyright 2005 Dead Deer Wildlife Surveillance Systems, LLC, All Rights Reserved

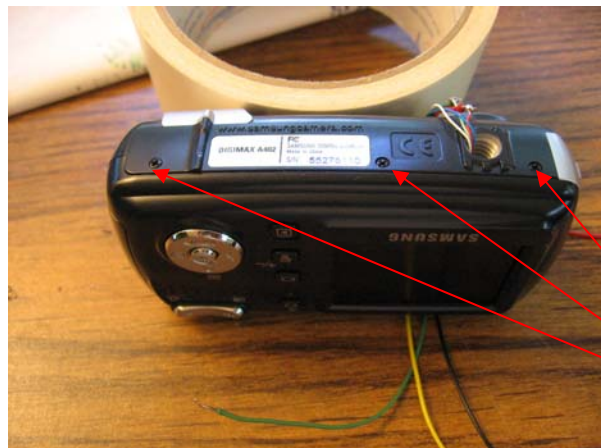
These instructions are for the modifications required to use the Samsung A402 Digital camera in a motion activated game and trail camera using products from Dead Deer Wildlife Surveillance Systems, LLC

WARNING performing these modifications will void your camera's warranty. In addition there is a risk you could render your camera unusable. Use of these instructions is at the user's risk and Dead Deer Wildlife Surveillance Systems, LLC accepts no responsibility for damages or injury arising from the use of these instructions.

Remove all batteries and media cards from the camera.

**Step 1 Opening the camera**

The first step in opening the camera is to remove (6) screws from the exterior of the case and (1) from inside the battery compartment.. To do this you will need a small phillips screw drive.

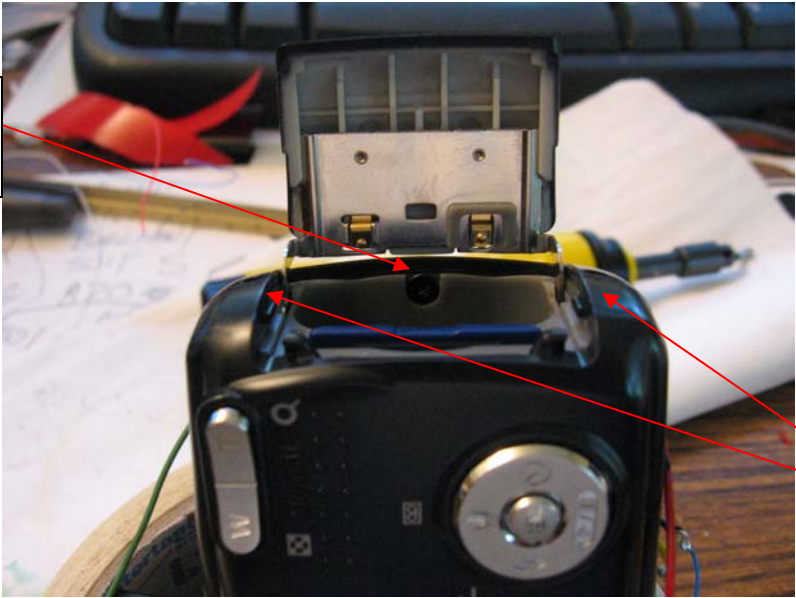


Bottom Screws



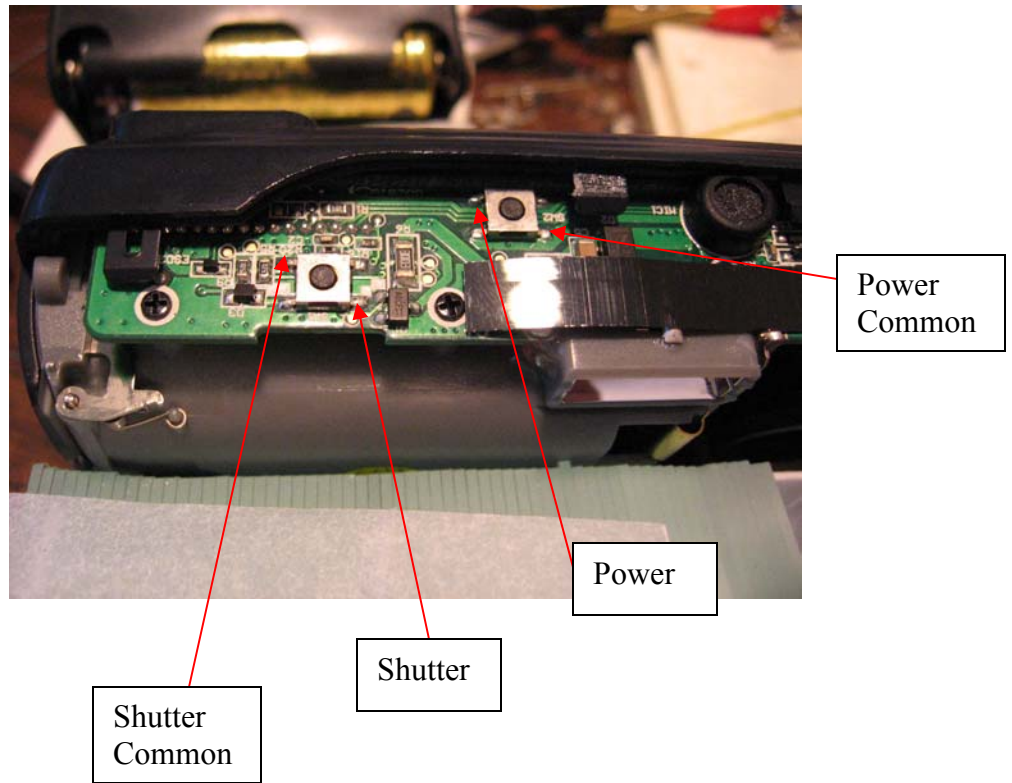
(1) End Screw

Battery Compartment  
Screw



(2) End  
Screws

After the screws are removed, open the USB cover and remove the front of the case exposing the push button on-off and shutter switches.



Solder 30 gage wires to the contacts shown, recording and labeling which wire is which.



Drill a hole thru the tripod mount and run the wires thru it. Reassemble the camera.  
Note: If using a pre-made 4 wire connector, run the wires thru the tripod mount before soldering to the contacts.

Congratulations, you are finished with the camera modifications.