

Sony P32 IR Mod

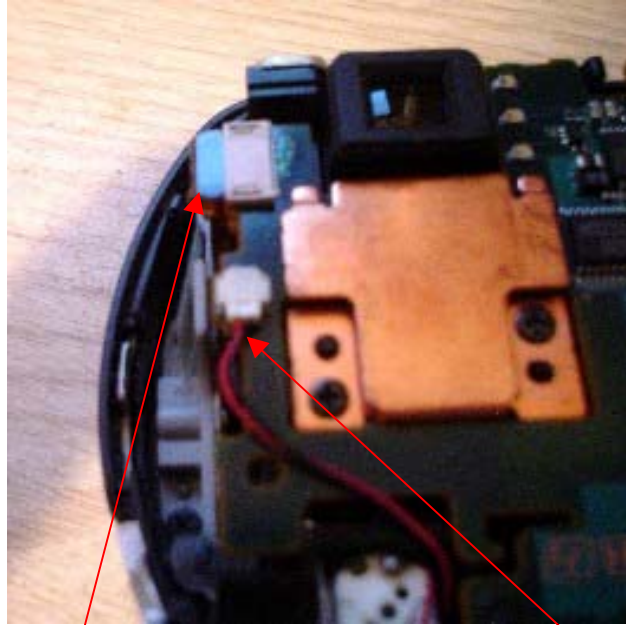


****Disclaimer****

This document is intended to explain how to make the necessary modifications to your Sony p32 camera in order for it to see infer red light. By doing this modification you will be voiding your warranty and could cause damage to your camera. I take no responsibility for any damages caused by this mod for it is for informational purposes only.

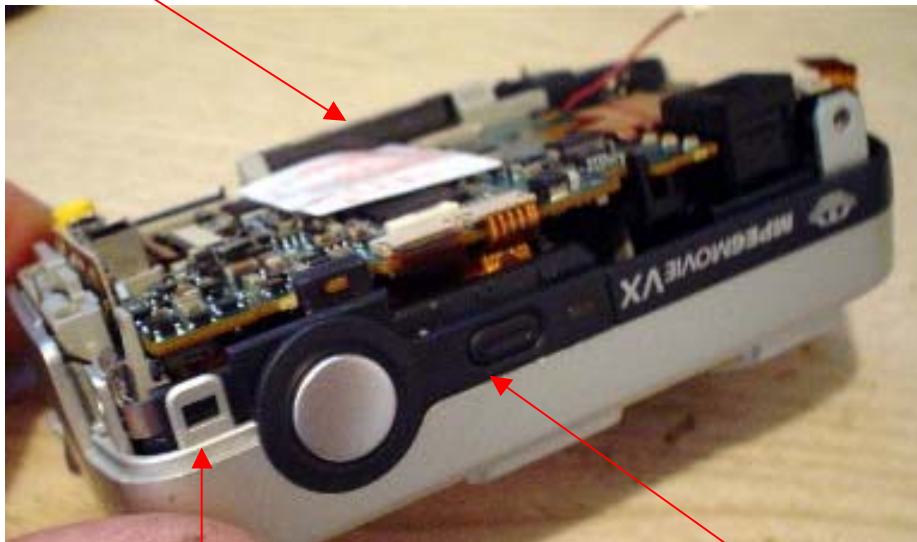


Remove four screws take off back being careful not to tear LCD ribbon cable. With a small screw driver remove the tape, lift the latch and carefully remove the LCD ribbon cable.



Next remove top ribbon cable by viewfinder and shutter motor connector

Card reader



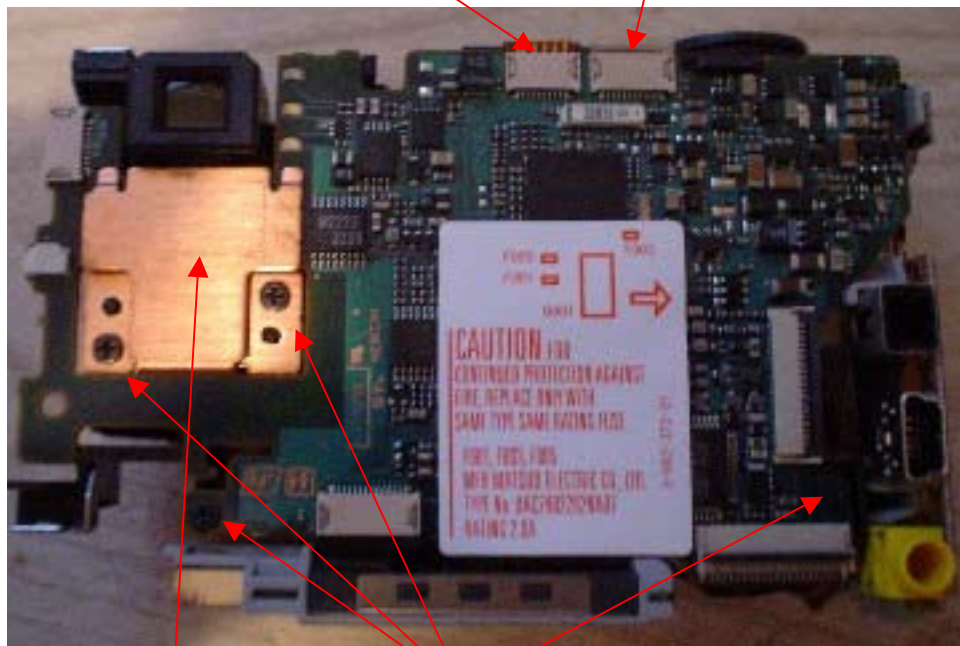
Tab

Step 3. With a small screwdriver or fingernail, lift in-between the shutter assembly and the case. You will also have to left back on the tab on the left to free the board assembly from the front of the case. By lifting on the card reader and the shutter assembly you will be able to remove the complete board assembly from the front of the case.

With the assembly board removed it will look like this.



Shutter ribbon Flash ribbon



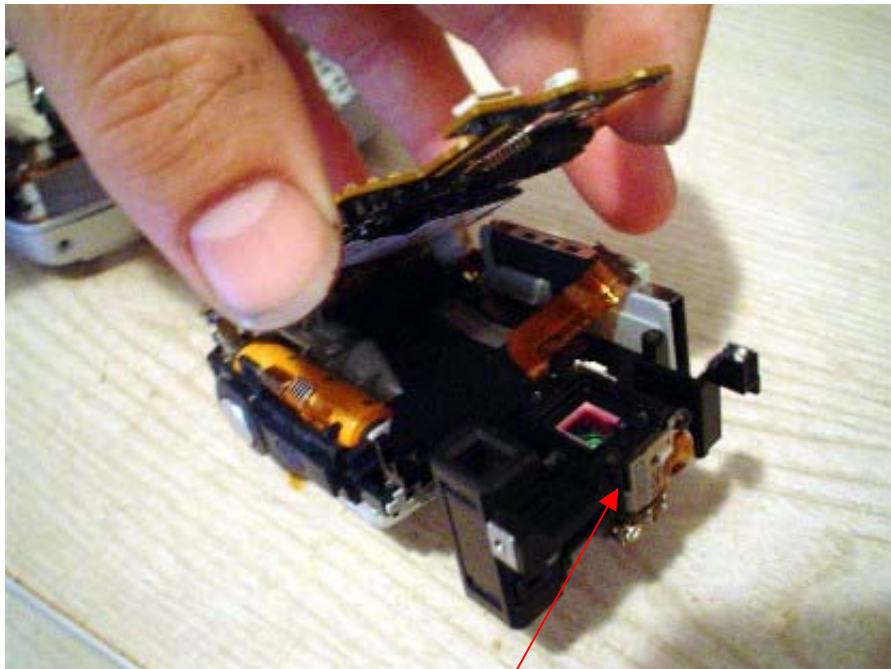
Metal plate 4 Screws

Next remove the four black screws on the board, remove the metal plate below the viewfinder and carefully remover the shutter and flash ribbon cables.

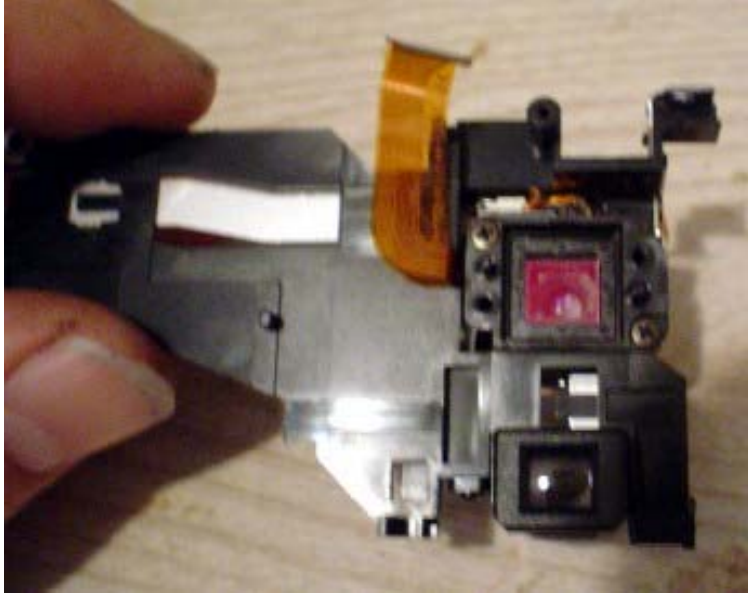


Ribbon Cable

Next carefully lift the side of the board up a little and remove one last ribbon cable. I will warn you this cable comes out easier then it goes in.



Now carefully lift the board and remove the lens assembly. Sometimes you can just tip the assembly over to get the glass out without having to remove it from the case.



If you remove the assembly this is what it will look like. The glass is be removed by just tipping it over. With the glass out replace it with a glass of the same size and reassemble the unit.

This might not be the best Mod but at least it will give you a place to start.