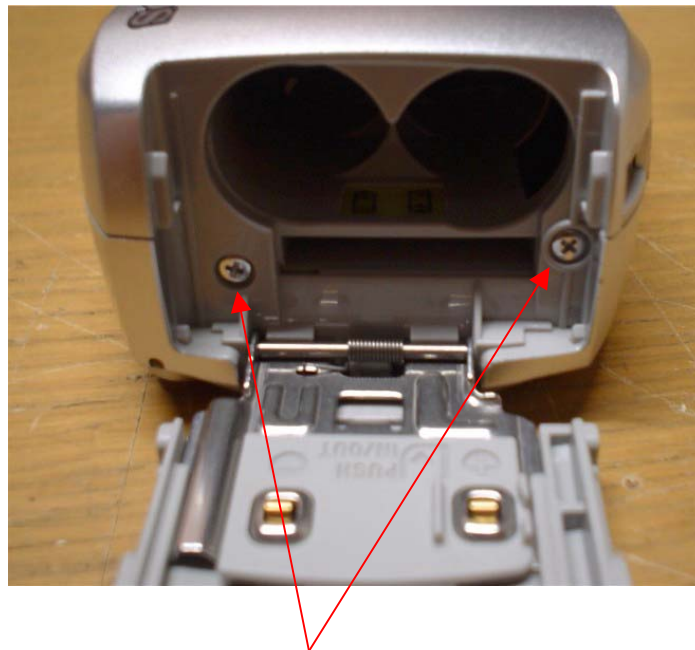




**\*\*Disclaimer\*\***

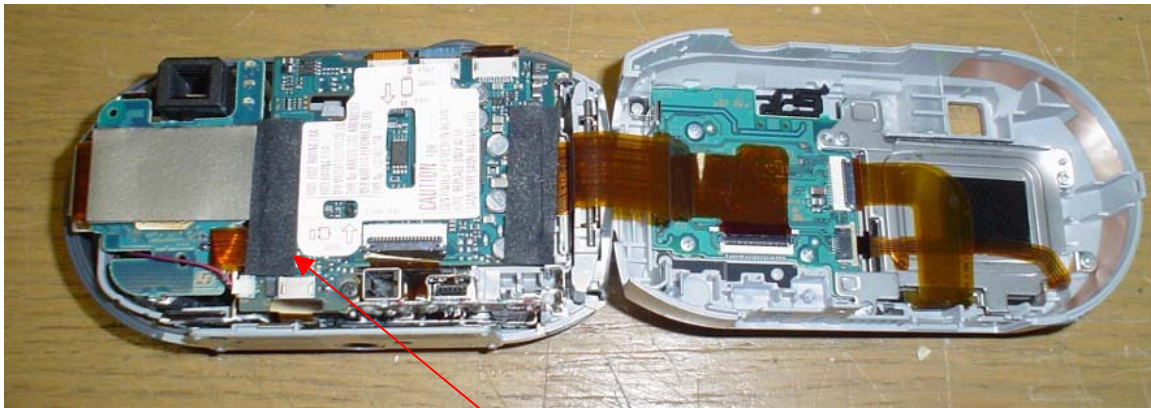
This document is intended to explain how to make the necessary modifications to your Sony p41 camera in order for it to see infer red light. By doing this modification you will be voiding your warranty and could cause damage to your camera. I take no responsibility for any damages caused by this mod for it is for informational purposes only.



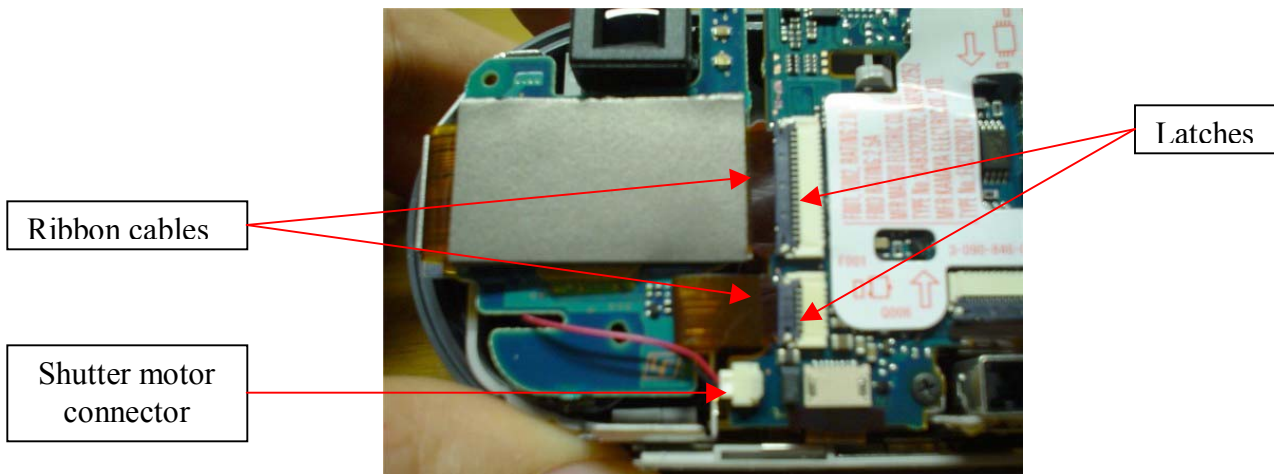
Remove batteries, memory card and 2 screws.



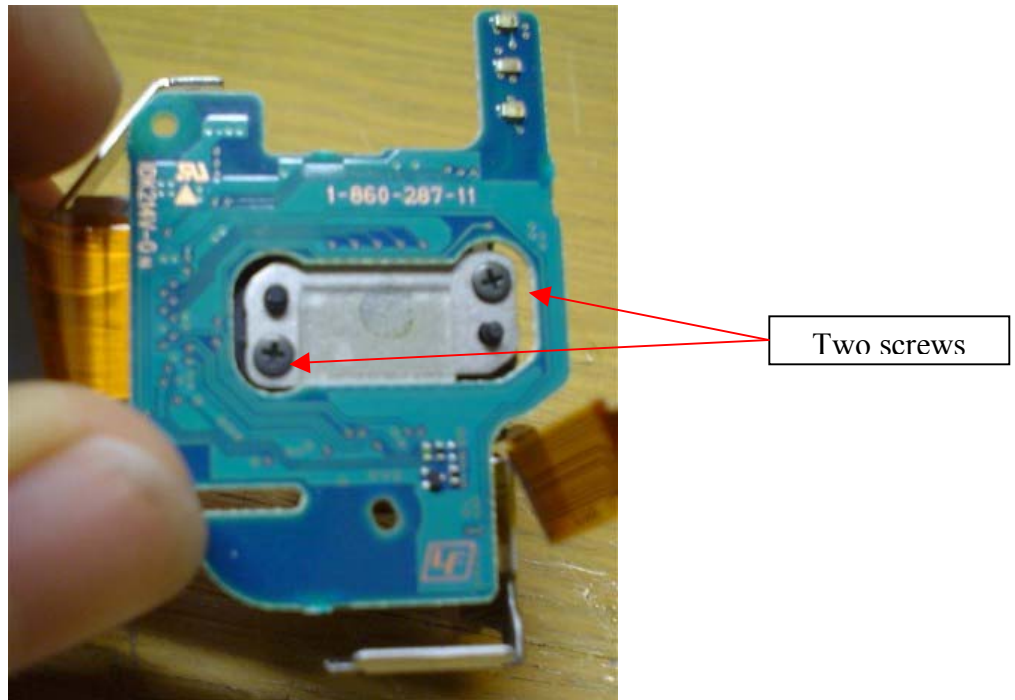
Next remove two screws from the bottom of the camera and carefully open it up, being careful not to tear LCD ribbon cable.



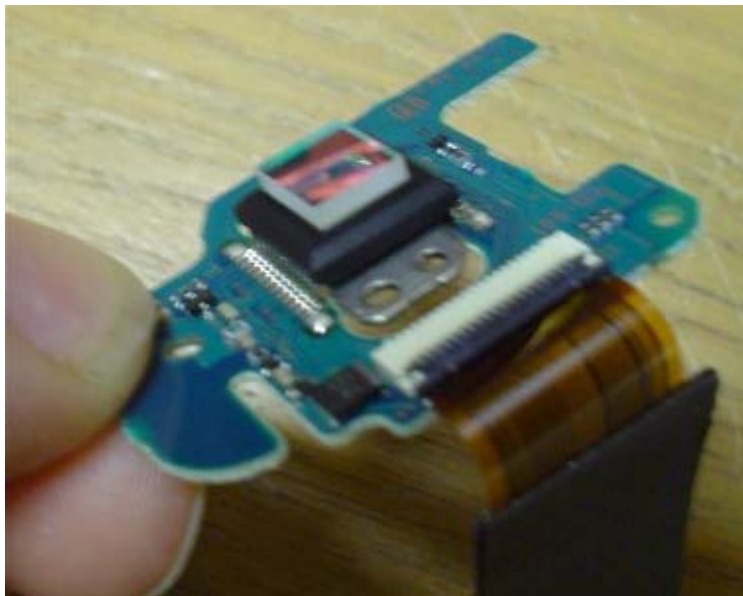
Next with a small screwdriver remove the tape



Next with the tape removed carefully lift the latches with a fingernail or small screwdriver and carefully remove the two ribbon cables. The disconnect shutter motor connector.



Next you can carefully remove the CCD and optical lens assembly from the camera. When out locate and remove the two screws that secure the CCD to the lens.



Now with the two screws removed carefully separate the CCD from the lens assembly. Most of the time the glass will be stuck to the plastic cover of the CCD. Last remove the IR blocking glass and replace with a piece of glass of the same size. It is easier to place the replacement glass into the square hole of the lens assembly and then screw the CCD back together. With the glass replaced reassemble the unit.