



***Dead Deer
Wildlife Surveillance
Systems, LLC***



**Modification Instructions
For The Sony DSC-P41**

Copyright 2005 Dead Deer Wildlife Surveillance Systems, LLC, All Rights Reserved

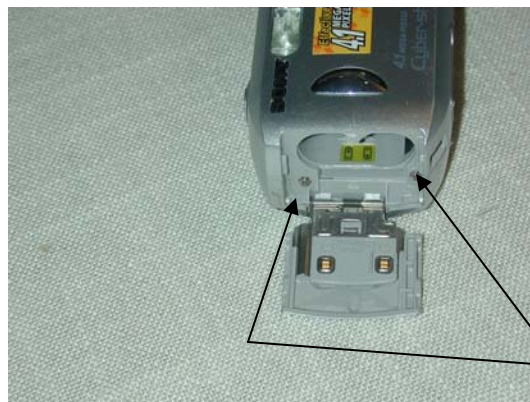
These instructions are for the modifications required to use the Sony DSC-P41 camera in a motion activated game and trail camera using products from Dead Deer Wildlife Surveillance Systems, LLC

WARNING performing these modifications will void your camera's warranty. In addition there is a risk you could render your camera unusable. Use of these instructions is at the user risk and Dead Deer Wildlife Surveillance Systems, LLC accepts no responsibility for damages or injury arising from the use of these instructions.

Remove all batteries and media cards from the camera.

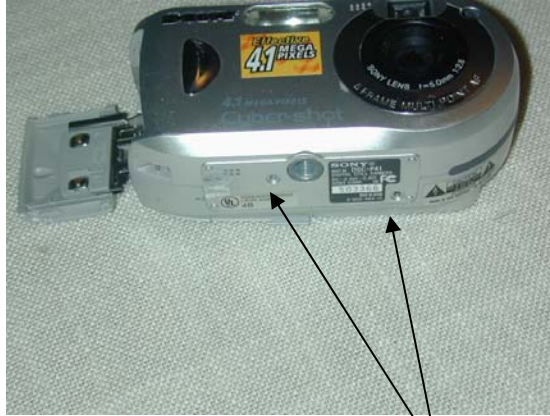
Step 1 Opening the camera

There are (4) screws that must be removed from the body of the camera before opening.



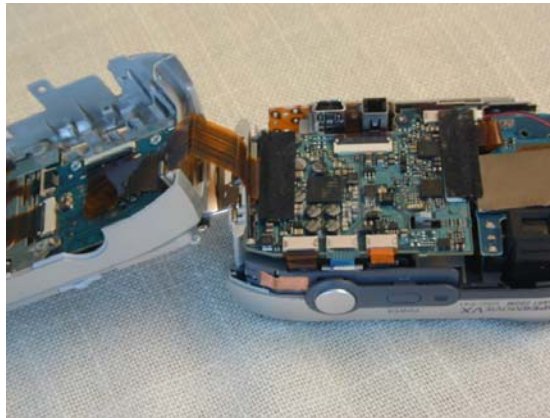
Battery Compartment Screws

Dead Deer Wildlife Surveillance Systems, LLC
844 Windy Hill
Fayetteville, AR
72703
(479)521-6501
ddeer@Arkansasusa.com



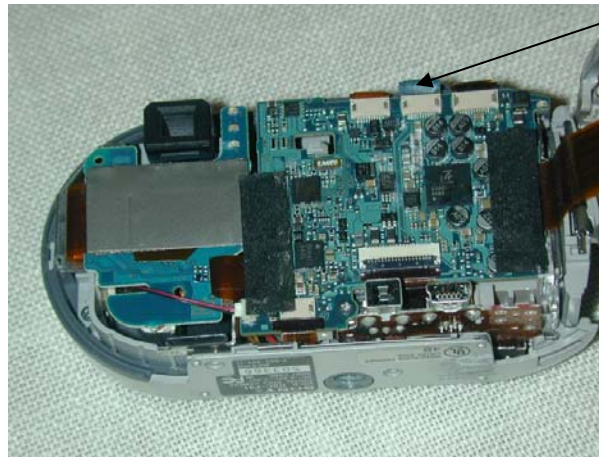
Bottom Screws

Once the 4 screws are removed, gently remove the back portion of the case. This may require running a fingernail around parts of the seam between the portions of the case to pop snaps integral to the case. Do not pull too hard or let the back portion flop off as you could damage the ribbon cable that connects the back to a board in the camera.



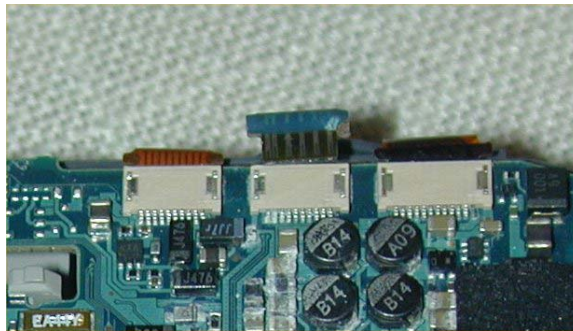
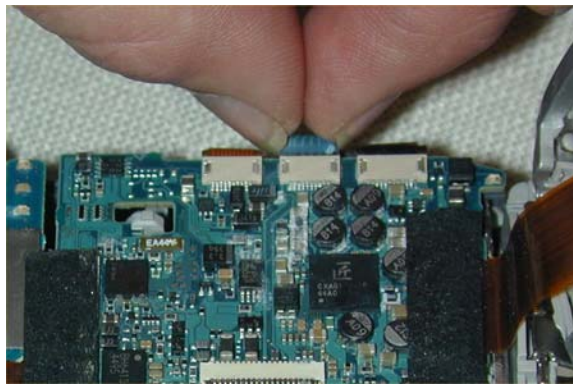
Step 2 Removing the Shutter Control Ribbon Cable

The picture below identifies the Shutter Control Ribbon Cable.



Shutter Control Ribbon

Gently remove the Shutter Control Ribbon Cable from its socket. I use my thumb and index finger nail to get under the small “ears” that protrude from the sides of the ribbon at the socket. Then I gently rock the ribbon sideways back and forth while withdrawing it. Do not use tool and pull on the ribbon it self or you will risk tearing it.



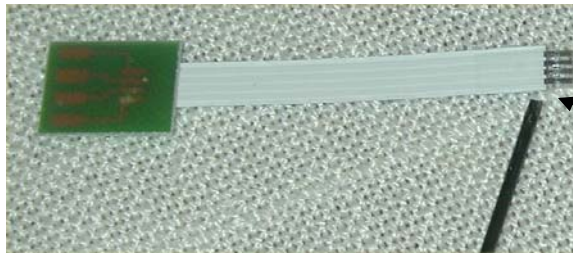
Step 3 Installing the Triggering Assembly

Gently tuck the free end of the Shutter Control Ribbon Cable under the green printed circuit board to expose the open ribbon socket.

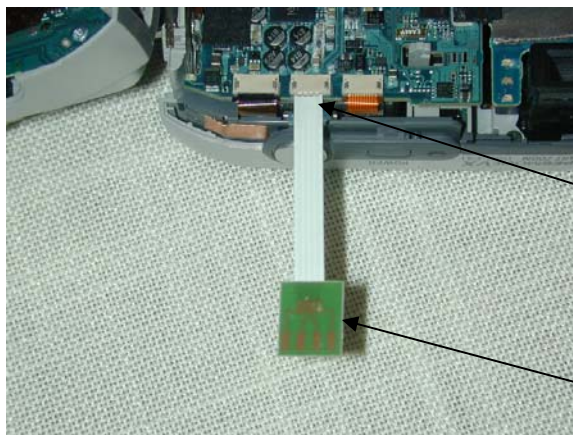


Tuck under board

Remove the plastic film from the end of the Triggering Assembly and insert into the socket as shown below



Remove Plastic Film



Insert with contacts to the far left

Copper side down

Gently fold the ribbon over making sure the contacts remain straight and in the proper location. Temporarily tape the ribbon to the camera board using electrical tape.



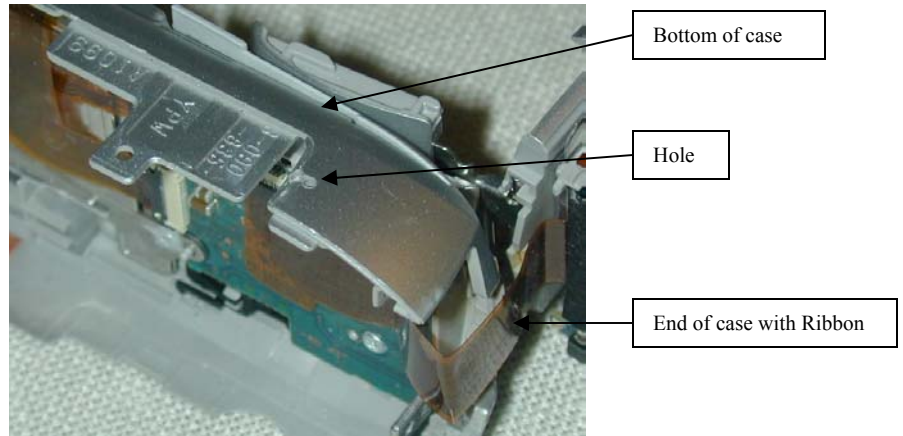
Gently re-insert the Shutter Control Ribbon Cable under the Triggering Assembly contacts making sure the contacts of both the Shutter Control Ribbon Cable and the Triggering assembly are aligned.



Push ribbon back to original depth

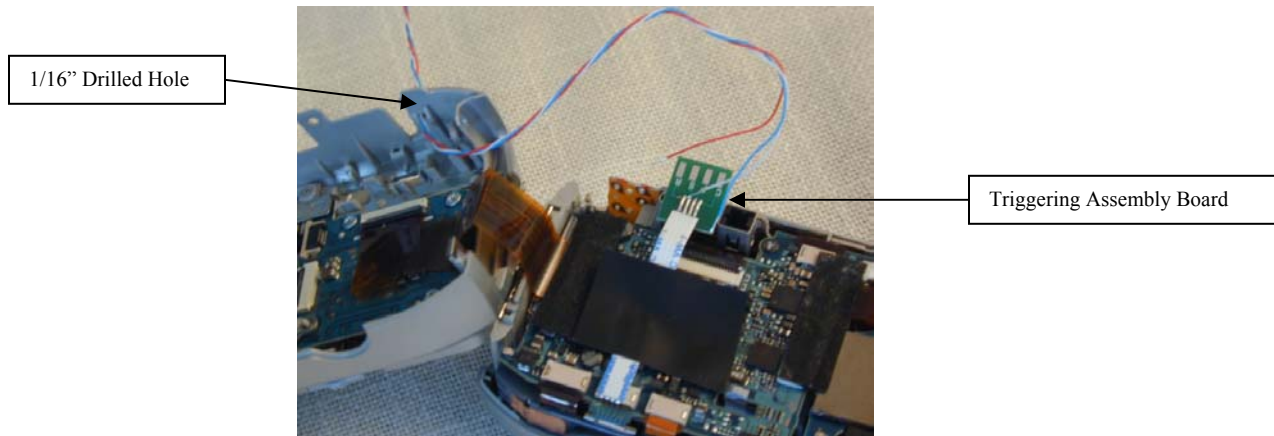
Step 4 Drilling the Exterior Access Hole

An Exterior Access Hole is required in the case to run the wires out of. We have located one in a location on the bottom which offers only a small chance for damaging components. We recommend a 1/16" diameter hole.

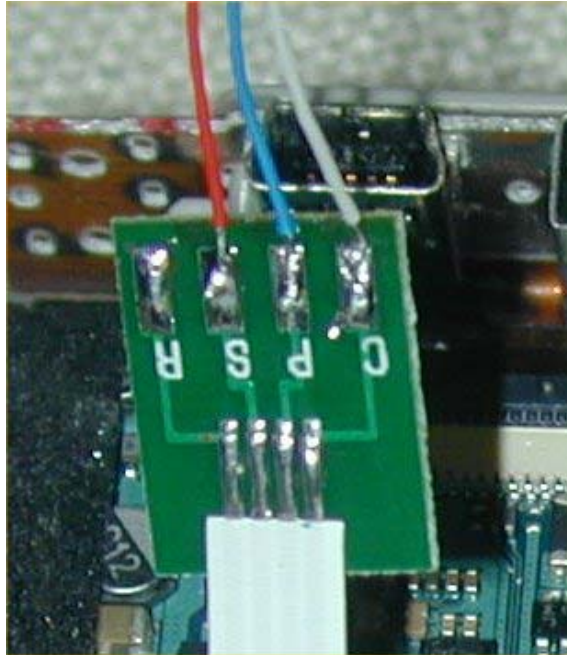


Step 5 Soldering Exiting wires to the Triggering Assembly Board

Feed the supplied 30 Gage wires connected to the Camera Cord Connector thru the hole previously drilled and route to the Triggering Assembly board.

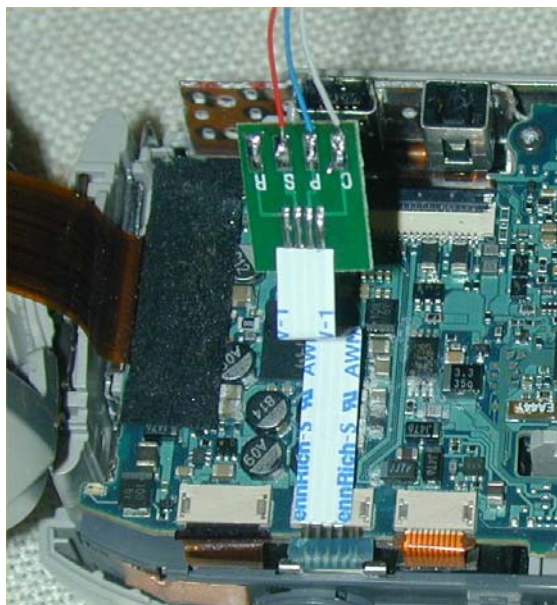


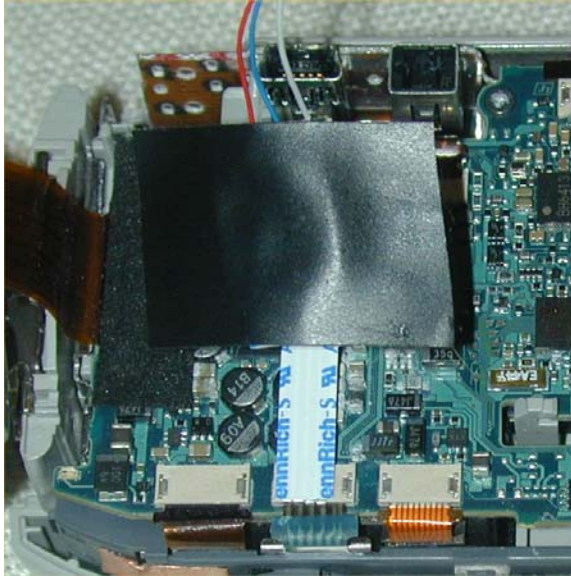
Solder the wires to the Triggering Assembly board in the following order:
Blue – P
White – C
Red – S



Step 6 Securing the Triggering Assembly & Closing the Camera

Fan-fold the ribbon cable of the Triggering Assembly as shown and apply electrical tape over the board, securing it to the camera's board.





Move the back side of the case into position, folding what wire will remain inside the camera and feeding the rest thru the drilled hole. Close the case.



Step 6 Attaching the Camera Cord Connector

Using either Super Glue or a strong 2 sided tape, attach the Camera Cord Connector to the bottom of the camera.



NOTE
Connector Shown is actually on a Sony DSC-P32 and is for illustration purposes only.

Congratulations, You are finished with the modifications to the Sony DSC-P41 for use in a Game & Trail Camera using components from Dead Deer Wildlife Surveillance Systems, LLC.