



HAGS HOUSE LIVE CHAT HELP SEARCH MEMBERS CALENDAR

Logged in as: ( Log Out )

My Controls · View New Posts · My Assistant · 1 New Messages

Hags House > Trail Camera & Video Game Camera Forums > Homemade Trail Camera

3 Pages ▾ 1 2 3 >

ADD REPLY NEW TOPIC

Little bit different options on S40 Mods, including shutter door

Options ▾

ghoot

Aug 29 2006, 10:55 PM

Post #1



Well, since no one is going to cough up some P41's, I'm going to start building some S40's. 😊 The shutter wire on the S40 for me is the hardest part. Thought I would share something that I tried on a W7 a long while ago that also works well on the S40. In the 1st pic, I marked the shutter contact with a ball point pen on the socket for a guide and then used an exacto knife to cut and scrape away part of the socket to get to the little contact. This isolates it for easy soldering.

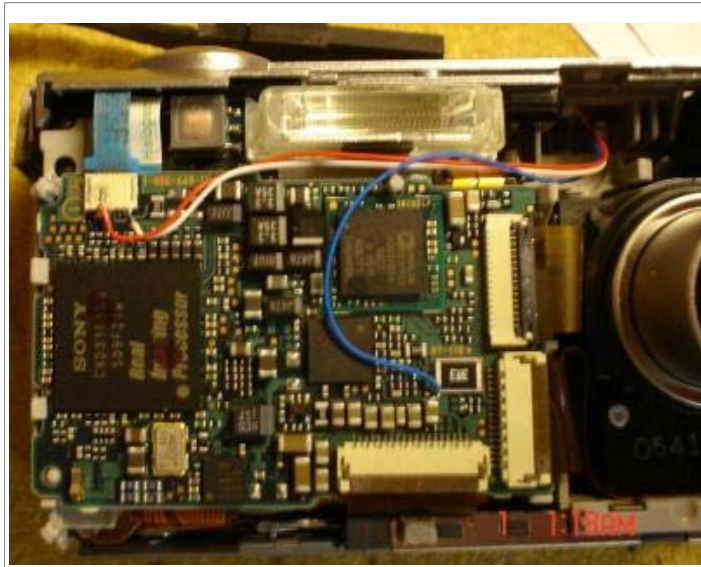
Advanced Member

Group: Advanced Members  
Posts: 1,111  
Joined: 18-July 03  
From: Duncan, OK

Member No.: 34



You can see it this pic where I soldered the common wire (blue wire). There are lots of places that you can do it, but this was a nice big place, compared to soldering the shutter and power anyway, 😊 and you don't have to remove the other cover to solder to the USB port.



On the shutter door, I tried something a little different that seems to work well and is very easy. Just gently lift on the ribbon that is soldered to the motor and melt the solder with your iron and it slides right off really easy without damaging anything.



Now just put some black tape on the little lugs sticking up on the back of the motor, and a little tape on the ribbon cable and you're good to go.



Gary



g-hoot

**Snapshot Sniper** [Full Units](#) - [Controller Boards](#) and [CAMO CASES](#)

212

Aug 29 2006, 11:28 PM

Post #2



Dang you smart guy 😊 Saved that one for sure...thanks!



My opinion is my own and may not be the same as yours, we are both entitled to them .

The owner of this site is NOT responsible for what I say...I am!

Advanced Member



Group: Development Team Member

Posts: 5,042

Joined: 3-November 03

From: Lone Star State

Member No.: 215

treetop

Aug 30 2006, 07:50 AM

Post #3



Advanced Member



Group: Development Team Member

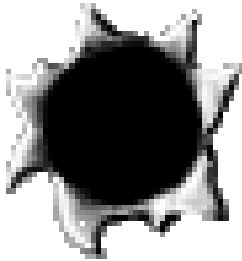
Posts: 2,714

Joined: 24-July 03

Member No.: 74



DropTheHammer



Advanced Member



Group: Members

Posts: 154

Joined: 18-July 03

From: Western Pennsylvania

Member No.: 44



Coondog



Advanced Member



Group: Development Team Member

Posts: 2,843

Joined: 13-January 04

Gary I really like the idea of the shutter solder point I have one here I need to do (Lack of p41s here also)I will give your method a shot I think I will stick to using the usb hood for the common though Thanks for sharing and good work



<http://www.huntingfootage.com/showgallery...when=&whenterm=>



Aug 30 2006, 08:05 AM

Post #4

Nice Job!

This post has been edited by DropTheHammer: Aug 30 2006, 09:48 AM



Aug 30 2006, 09:05 AM

Post #5

Nice Gary!!! I had no idea there was any other way to mod the s40 other than a shutter assembly!!! 📺 😊



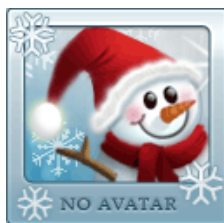
I love this website!!!

Pull your liberal head out of your donkey a\$\$...

From: Irving, Texas

Member No.: 290

yetinme



Advanced Member



Group: Advanced Members  
 Posts: 283  
 Joined: 2-September 03  
 From: SE Wisconsin hunt in West Central Wisconsin

Member No.: 150

Aug 30 2006, 11:09 AM

Post #6

Very nice Gary, it kind of makes me want to do another W5 or W7 this way to see if it helps.

The shutter assemblies are starting to look too expensive compared to interest level in the W5. I am seeing prices on the order of \$12 a piece for the first 50. It makes it hard to make and sale them for \$8 at that rate.

Mark



**YetiCam** Game Cameras and Control Boards  
 Visit Us at [www.yeticam.com](http://www.yeticam.com)

212



Advanced Member



Group: Development Team Member  
 Posts: 5,042  
 Joined: 3-November 03  
 From: Lone Star State

Member No.: 215

Aug 30 2006, 12:02 PM

Post #7

OH NO...the start-up cost on shutter assemblies is at least \$1500...(private joke lol)

My opinion is my own and may not be the same as yours, we are both entitled to them .

The owner of this site is NOT responsible for what I say...I am!

Aug 30 2006, 12:47 PM

Post #8

treetop



Advanced Member

Group: Development Team Member  
Posts: 2,714  
Joined: 24-July 03  
Member No.: 74

[OFF](#) [CARD](#) [PM](#)

Gary which contact is that the blue wire is soldered to the second one in from the left side Playing with one now and sure dont want to do the wrong one Thanks



<http://www.huntingfootage.com/showgallery...when=&whenterm=>

[REPORT](#) [MULTI +](#) [QUOTE](#) [TOP ↑](#)

**headnurse69**

Aug 30 2006, 01:09 PM

Post #9



QUOTE

*Nice Gary!!! I had no idea there was any other way to mod the s40 other than a shutter assembly!!!*

Agent 69

Group: Development Team Member  
Posts: 5,152  
Joined: 5-May 04  
From: Michigan--EST

Member No.: 509

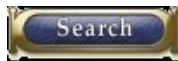
Well, Coondog, there is but we figured you weren't smart enough to handle it.



[Runs with Scissors](#)

Si vis Pacem, Para Bellum.

The owner of this site is NOT responsible for what I say... I am!  
Any threats of legal action will result in plenty of raucous laughter.  
I have to go find the plunger now... don't ask....



### [Cam Building Help Files](#)

### [My Webshots](#)

[OFF](#) [CARD](#) [PM](#)

[REPORT](#) [MULTI +](#) [QUOTE](#) [TOP ↑](#)

**scruffnbeez**

Aug 30 2006, 01:11 PM

Post #10



QUOTE(Coondog @ Aug 30 2006, 09:05 AM)

*Nice Gary!!! I had no idea there was any other way to mod the s40 other than a shutter assembly!!!*

Cam Builder Extraordinary



Group: Advanced Members  
Posts: 3,807  
Joined: 23-July 03  
From: Holton, Kansas

Member No.: 69



you chain yanker.....



This post has been edited by **scruffnbeez**: Aug 30 2006, 01:11 PM



He who laughs at himself, never runs out of anything to laugh at. Chinese Proverb

**Search**

[Beezer and Scruffy's new site](#)

[Game Cam Pics](#) - Under Construction...just started adding pictures

[MY TREES](#) - Updated 07/26/06



**ghoot**

Aug 30 2006, 01:14 PM

Post #11



Thanks folks.

treetop,

The shutter is the second from the left.

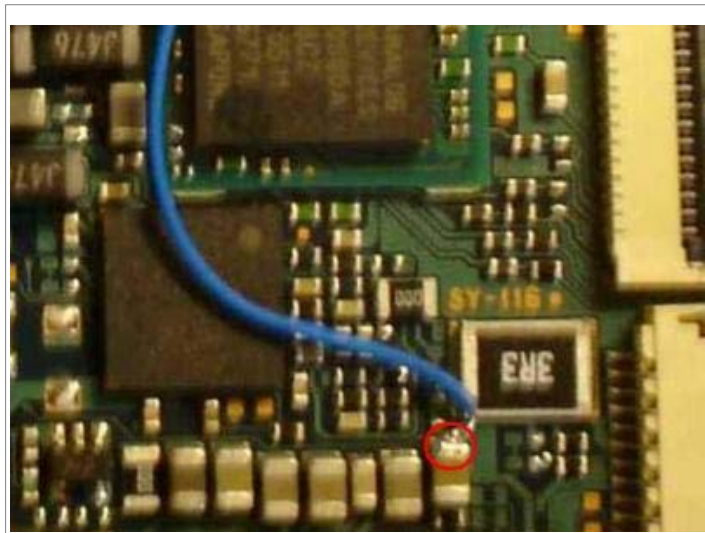
Here ya go on the common...it's the end of the surface mount cap that's circled.

Advanced Member



Group: Advanced Members  
Posts: 1,111  
Joined: 18-July 03  
From: Duncan, OK

Member No.: 34



OFF CARD PM

yetinme



Advanced Member

Group: Advanced Members  
Posts: 283  
Joined: 2-September 03  
From: SE Wisconsin hunt in West Central Wisconsin  
Member No.: 150

ON! CARD PM

212



Advanced Member

Group: Development Team Member  
Posts: 5,042  
Joined: 3-November 03  
From: Lone Star State  
Member No.: 215

ON! CARD PM

sgha

g-hoot

**Snapshot Sniper** [Full Units](#) - [Controller Boards](#) and [CAMO CASES](#)

REPORT MULTI+ QUOTE TOP ↑

Aug 30 2006, 01:20 PM

Post #12

LOL Gary! I must not be doing something right!



**YetiCam** Game Cameras and Control Boards  
Visit Us at [www.yeticam.com](http://www.yeticam.com)

REPORT MULTI+ QUOTE TOP ↑

Aug 30 2006, 01:32 PM

Post #13

All joking aside...you guys are great for sharing this 😊



My opinion is my own and may not be the same as yours, we are both entitled to them .

The owner of this site is NOT responsible for what I say...I am!

REPORT MULTI+ QUOTE TOP ↑

Aug 30 2006, 01:44 PM

Post #14





Newbie



Group: Members  
Posts: 4  
Joined: 16-August 06

Member No.: 3,120

OFF CARD PM

REPORT MULTI + QUOTE TOP ↑

ghoot

Aug 30 2006, 02:04 PM

Post #15



sgha,

You got it, this does the same thing as taping the wires. I'm just not as steady as I used to be and have a hard time on the small stuff sometimes. Turn it on and then pull the batts to keep the door opened. The lens still zooms in and out.



g-hoot

**Snapshot Sniper Full Units - Controller Boards and CAMO CASES**

Advanced Member



Group: Advanced Members  
Posts: 1,111  
Joined: 18-July 03  
From: Duncan, OK

Member No.: 34

OFF CARD PM

REPORT MULTI + QUOTE TOP ↑

Enter Keywords

Search Topic

« Next Oldest · **Homemade Trail Camera** · Next Newest »

3 Pages ▾ 1 2 3 >

FAST REPLY ADD REPLY NEW TOPIC

1 User(s) are reading this topic (0 Guests and 0 Anonymous Users)

1 Members: [FznYupr](#)

-- Homemade Trail Camera Go

Frosty (3386)

English

[Lo-Fi Version](#)

Time is now: 18th December 2006 - 09:26 PM



HAGS HOUSE LIVE CHAT HELP SEARCH MEMBERS CALENDAR

Logged in as: FznYupr ( Log Out )

My Controls · View New Posts · My Assistant · 1 New Messages

Hags House > Trail Camera & Video Game Camera Forums > Homemade Trail Camera

3 Pages < 1 2 3 >

ADD REPLY NEW TOPIC

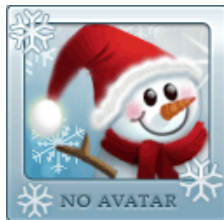
Little bit different options on S40 Mods, including shutter door

Options

sgha

Aug 30 2006, 02:21 PM

Post #16



Hey ghoot, thanks! How did you tape that ribbon cable down to keep it out of the way when closing up the case?

Newbie

Group: Members  
Posts: 4  
Joined: 16-August 06

Member No.: 3,120

OFF CARD PM

REPORT

MULTI+ QUOTE TOP

ghoot

Aug 30 2006, 02:23 PM

Post #17



I just put some tape on the motor to cover the contacts on it and then taped the ribbon back down on top of the motor and it worked great.



g-hoot

[Snapshot Sniper Full Units - Controller Boards and CAMO CASES](#)

Advanced Member

Group: Advanced Members  
Posts: 1,111  
Joined: 18-July 03

From: Duncan, OK

Member No.: 34

OFF CARD PM

REPORT

MULTI + QUOTE TOP ↑

**sgha**

Aug 30 2006, 02:29 PM

Post #18



Awesome, gonna make the mod when i get home today, any ideas on how much faster trigger speed you get out of it?

Newbie



Group: Members  
 Posts: 4  
 Joined: 16-August 06

Member No.: 3,120

OFF CARD PM

REPORT

MULTI + QUOTE TOP ↑

**treetop**

Aug 30 2006, 03:01 PM

Post #19



Just did 2 this way Gary and it worked great I did sold the common to the usb solder lugs keep my iron off those components whenever possible

Lookslike I am 16 bucks ahead 😊

Really though I had one in a cam I sold and I had done them the way Travis website shows and a wire had come loose I just replaced it with a different s40 and never got to it to fix till now

I also had a new one in the box I opened it also after I have had it for awhile and found it has lines in the lcd screen. You can use it but just has a bunch of lines in it I modded it your way and its working perfectly

Gonna see if I can sell them to someone now Anyone looking for a couple s40s modded send me a pm Thanks

Advanced Member



Group: Development Team Member  
 Posts: 2,714  
 Joined: 24-July 03

Member No.: 74

Thanks Ghoot it Works 😊

Attached thumbnail(s)



<http://www.huntingfootage.com/showgallery...when=&whenterm=>

OFF CARD PM

REPORT

MULTI+ QUOTE TOP ↑

**ghoot**

Aug 30 2006, 03:42 PM

Post #20



You crack me up TT. 😄

sgha,  
Trigger speed is the same after disabling the door. It just gets rid of the noise.  
Gary



**g-hoot**

**Snapshot Sniper Full Units - Controller Boards and CAMO CASES**

Advanced Member  


Group: Advanced Members  
 Posts: 1,111  
 Joined: 18-July 03  
 From: Duncan, OK

Member No.: 34

OFF CARD PM

**ghoot**



Advanced Member  
[Progress Bar]

Group: Advanced Members  
Posts: 1,111  
Joined: 18-July 03  
From: Duncan, OK

Member No.: 34

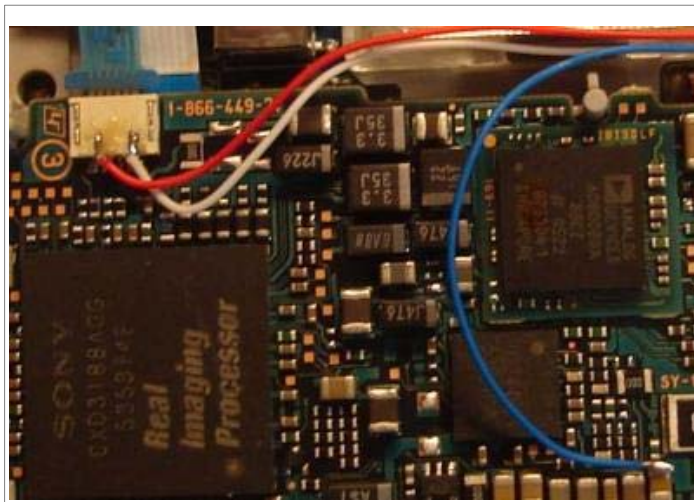
REPORT

MULTI + QUOTE TOP ↑

Aug 31 2006, 07:47 PM

Post #21

Well, I went ahead and just started doing both wires this way. Did 4 cams last night and they all work great. 😊



**g-hoot**

**Snapshot Sniper Full Units - Controller Boards and CAMO CASES**

OFF CARD PM

REPORT

MULTI + QUOTE TOP ↑

Aug 31 2006, 08:21 PM

Post #22

**treetop**



Advanced Member  
[Progress Bar]

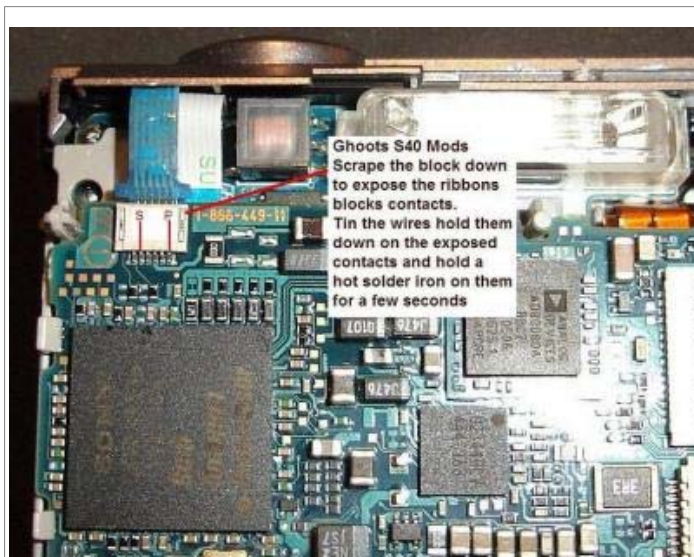
Group: Development Team Member  
Posts: 2,714  
Joined: 24-July 03

Member No.: 74

Ghoot your 4 and my 2 thats 48 bucks in our pockets Maybe we should take the wives out for dinner 😊

I made a picture up of what contacts are being scraped out I really liked doing it this way as you really dont heat the board up as much Look it over and let me know if they are right

Attached thumbnail(s)



<http://www.huntingfootage.com/showgallery...when=&whenterm=>

OFF CARD PM

REPORT

MULTI + QUOTE TOP ↑

FznYupr

Aug 31 2006, 08:23 PM

Post #23



Nice job Gary!

That looks like a good way to mod the shutter connection! I'll have to try it out on my next one 😊

I'll also put a link to this on the webpage. Thanks for sharing.

Travis



[My Trail Pics, Videos and Mods](#)

ON! CARD PM

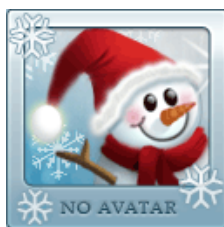
REPORT

EDIT MULTI + QUOTE TOP ↑

Missouri Boy

Aug 31 2006, 09:18 PM

Post #24



On the topic fo S40s...Anybody experimented with the lense extension? I tried to remove the small ribbon from the motor that drives the lense assembly and that was a bad idea. It took me a few hours to get that one back together. I wonder now if out of the four connections that ribbon makes that maybe two of them indicate position of the lense barrel. If that were the case, one could just remove the actual motor power connectors and leave the position indicators. Anybody have a schematic of a S40?

Newbie



Group: Members  
Posts: 9  
Joined: 3-May 06  
Member No.: 2,807

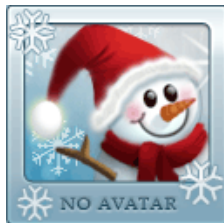
OFF CARD PM

REPORT MULTI+ QUOTE TOP ↑

**smclark**

Sep 1 2006, 01:09 PM

Post #25



Anybody wanna buy the 4 sa I just got in the other day? 😞

Member



Group: Members  
Posts: 34  
Joined: 26-October 03  
From: WI  
Member No.: 208

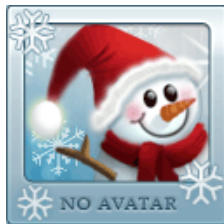
OFF CARD PM

REPORT MULTI+ QUOTE TOP ↑

**buckshot164**

Sep 23 2006, 01:46 AM

Post #26



I took the cover off the camera. I can` t see very well, is there anyone that will do this mod for me.

Member



Group: Members  
Posts: 11  
Joined: 15-October 05  
Member No.: 2,126

OFF CARD PM

REPORT MULTI+ QUOTE TOP ↑

**Coondog**

Sep 23 2006, 03:49 PM

Post #27





Advanced Member

Group: Development Team Member  
Posts: 2,843  
Joined: 13-January 04  
From: Irving, Texas

Member No.: 290

[OFF](#) [CARD](#) [PM](#)

**buckshot164**



Member

Group: Members  
Posts: 11  
Joined: 15-October 05

Member No.: 2,126

[OFF](#) [CARD](#) [PM](#)

**smclark**



Member

Group: Members  
Posts: 34  
Joined: 26-October 03  
From: WI

Member No.: 208

QUOTE(smclark @ Sep 1 2006, 01:09 PM)

Anybody wanna buy the 4 sa I just got in the other day?

lol... What did that set you back... 32 bucks plus shipping???

Sorry about your luck..



I love this website!!!

Pull your liberal head out of your donkey a\$\$.

[REPORT](#)

[MULTI +](#)

[QUOTE](#)

[TOP ↑](#)

☐ Sep 23 2006, 04:01 PM

Post #28

I decided to try this mod. It wasn't as bad as it looks. I scraped the conector till the wire was exposed. I tined the wires and laid them on the connector and put the soldering iron on it quickly. This was much easier than ribbon. I was able to do this and I have poor eye sight and shaky hands. I did put the common to the usb hood.

[REPORT](#)

[MULTI +](#)

[QUOTE](#)

[TOP ↑](#)

☐ Sep 23 2006, 04:02 PM

Post #29

Yup, total rip off. Most of the time they break when you fold it over. Oh well...

OFF CARD PM

REPORT

MULTI+ QUOTE TOP ↑

Coondog

Sep 24 2006, 10:47 AM

Post #30



I would try to sell them on the other site if I were you.. You dont need them anyways!



I love this website!!!

Pull your liberal head out of your donkey a\$...

Advanced Member



Group: Development Team Member

Posts: 2,843

Joined: 13-January 04

From: Irving, Texas

Member No.: 290

OFF CARD PM

REPORT

MULTI+ QUOTE TOP ↑

Enter Keywords

Search Topic

« Next Oldest · **Homemade Trail Camera** · Next Newest »

3 Pages < 1 2 3 >

FAST REPLY ADD REPLY NEW TOPIC

1 User(s) are reading this topic (0 Guests and 0 Anonymous Users)

1 Members: [FznYupr](#)

-- Homemade Trail Camera Go

Invision Power Board v2.1.7 © 2006 IPS, Inc.  
Licensed to: Hag's House

Skin by: [Dragonfly](#) © all rights reserved.

Frosty (3386)

English

[Lo-Fi Version](#)

Time is now: 18th December 2006 - 09:27 PM