



[Live Chat](#) | [Calendar](#) | [Members](#) | [Search](#) | [Help](#) | [Hag's House](#)

Logged in as: [FznYupr](#) ([Log Out](#))

[My Controls](#) · [View New Posts](#) · [My Assistant](#) · [My Friends](#) · [0 New Messages](#)



[Hag's House](#) > [Trail Camera & Video Game Camera Forums](#) > [Homemade Trail Camera](#)

[Add Reply](#)

[New Topic](#)

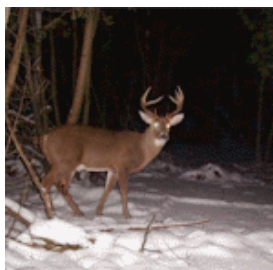
• [S40 Cable Damaged from Lens Cover?, Look here for solution](#)

[Options](#) ▼

[FznYupr](#)

Mar 9 2006, 09:42 PM

Post #1



Advanced Member



Group: Advanced Members

Posts: 387

Joined: 15-August 05

From: MQT MI

Member No.: 1,951

I was pusing around and found this... Please correct if you found otherwise.

Problem: 😊

S40 ribbon cable from the lens cover is broken

Not sure... Symptom: 😊

Camera turn on, Lens cover does not open, Camera LCD says power off and on.

Cause: 😊

Camera checks status of lens door at power up. If Lens cover open switch is not made Camera boot fails

Solution 😊

Manually open shutter lens door. Remove cable from connector at board (Do not reconnect after mod) Solder a jumper as shown in attached picture. Reassemble camera and test. If this was the problem and if done correctly Camera will now boot.

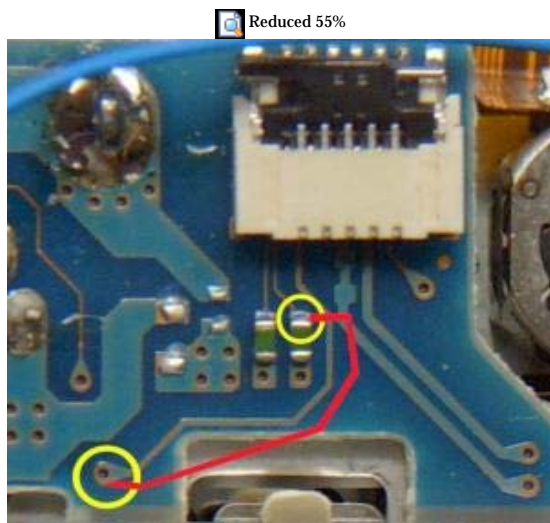
Caution 😊

Solder joints are very small. Only attempt if you are good at soldering NO OFFENCE. Cover work area with some tape in case of a solder blob.

Good Luck.

This post has been edited by [FznYupr](#): Mar 9 2006, 10:12 PM

Attached thumbnail(s)



654 x 578 (113.75K)



Report Edit MultiQ+ Quote ” Top ↑

 **headnurse69**





Mar 9 2006, 10:07 PM

Post #2



Agent 69
◆◆◆

Group: Development Team
Member
Posts: 5,718
Joined: 5-May 04
From: Where ever I go, there I am.
Member No.: 509

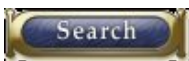
  Something else to add to the 'help' files.  

[I will always be a consequence of your actions.](#)

Runs with Scissors--and I'm good.

Si vis Pacem, Para Bellum.


I have to go find the plunger now... don't ask....



[Cam Building Help Files](#)

[My Webshots](#)

Report MultiQ+ Quote ” Top ↑

 **212**

Mar 9 2006, 10:21 PM

Post #3



Advanced Member



Group: Development Team
Member
Posts: 6,759
Joined: 3-November 03
From: Lone Star State
Member No.: 215

Nice of you to share...thanks :cool:

PayPal contributions to the new DVR test fund can be sent to dvrtestfund@yahoo.com

PayPal contributions to the cam test fund can be sent to camtestfund@yahoo.com

The owner of this site is NOT responsible for what I say...I am!

Report

MultiQ+

Quote ”

Top ↑

 [mass_bowhunter](#)



Member



Group: Members
Posts: 18
Joined: 7-July 06
Member No.: 2,936

Aug 12 2006, 12:05 PM

Post #4

Can this be used to force the lens to stay fully extended? If so, does that decrease the trigger time as the camera doesn't need to wait for the lens to extend before snapping a photo?

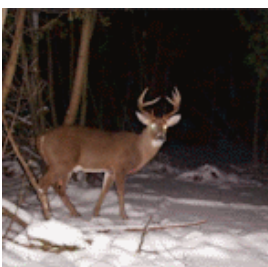
Report

MultiQ+

Quote ”

Top ↑

 [FznYupr](#)



Aug 12 2006, 03:38 PM

Post #5

QUOTE(mass_bowhunter @ Aug 12 2006, 01:05 PM) ↩

Can this be used to force the lens to stay fully extended? If so, does that decrease the trigger time as the camera doesn't need to wait for the lens to extend before snapping a photo?

Nope, It will only allow the camera to function again if this cable becomes damaged during the MOD.

Advanced Member



Group: Advanced Members

Posts: 387

Joined: 15-August 05

From: MQT MI

Member No.: 1,951

So far to my knowledge there is no way to keep the lens fully extended. I have one idea to try but haven't had time yet. Too busy with the new house.



Report

Edit

MultiQ+

Quote ”

Top ↑

teebo
 Aug 13 2006, 09:27 AM

Post #6



can i make this jumper instead of the "covering of contacts on shutter cable with tape " mod to keep the lens doo open? i assume it would work and i could just leave the shutter ribbon unplugged.. i will have to do some looking to see where these contacts are.. that pic is quite a close-up..a good cam and pic both..

thanks

Advanced Member



Group: Advanced Members

Posts: 307

Joined: 14-July 05

From: south east texas..(on the coast)

Member No.: 1,828

teebo

This post has been edited by **teebo**: Aug 13 2006, 09:28 AM

Teebo

"Good Judgement Is Often The Result Of Experience : However Experience Is Often The Result Of Poor Judgement"

Report

MultiQ+

Quote ”

Top ↑

FznYupr
 Aug 13 2006, 11:20 AM

Post #7



You could just put the jumper wire in and leave the ribbon cable out.... By I think putting a piece of scotch tape on the ribbon is much easier.



Advanced Member



Group: Advanced Members

Posts: 387

Joined: 15-August 05

From: MQT MI

Member No.: 1,951

[Report](#)

[Edit](#)

[MultiQ+](#)

[Quote ”](#)

[Top ↑](#)

Enter Keywords

[Search Topic](#)

« Next Oldest · **Homemade Trail Camera** · Next Newest »

[Fast Reply](#)

[Add Reply](#)

[New Topic](#)

|-- Homemade Trail Camera

[Go](#)

Powered By IP.Board © 2007 IPS, Inc.
Licensed to: Hag's House

Skin by: [SbyD](#) © all rights reserved.

[Club](#)

[English](#)

Lo-Fi Version

Time is now: 17th September 2007 - 08:18 PM