


[Home](#)
[Search Parts](#)
[Search Documents](#)
[Shopping list](#)
[FAQ](#)
[Preferences](#)


CONFIDENTIAL

Last Update
5/19/2006

Event ID
E29896367

Model
DSCS40

Subject
White or blank LCD display

SYMPTOMS

LCD display is either blank or WHITE. When the cabinet is opened or LCD flexible cable is touched, the symptom disappears. This is caused by connection defect or poor contact between connector and LCD flex cable due to the pressure or stress created by the rib in the front cabinet to the connector.

RESOLUTION

Refer to pictures shown in attached supporting graphics below for the correction procedure.

SUPPORTING DOCUMENTS AND GRAPHICS



Name: PV05DSC556_ Revised.jpg

Description: Correction procedure to remove the ribs on the front cabinet

MORE INFORMATION

- [Unit/Model Details](#)
- [Links](#)

Unit/Model Detail

Unit(s):	SN Start	SN End	Factory	Family Name	Product Category
DSCS40	ALL	ALL			CAM

Links

(B-Mech General) Change in B-Mech Drum Assy's
 (B-Mech General) Improved LS Chassis, FP249 and Cassette Compartment
 (B-Mech General) Slow Loading
 8MM AND DAT HEAD CHECKER
 AVAILABILITY OF ALIGNMENT TAPE INDICATOR JIG T99856
 Availabilty of Camcorder Battery Connection Jig/ J-6082-313-A
 B MECH GENERAL IMPROVED DRUM BASE
 CLEANING LIQUID
 Complete LS Chassis Assembly is Now Available (B-Mech General)
 Component Value Changes To LANC Jig Hardware.
 E MECHANISM DETECTOR PRISM NOW AVAILABLE
 FIVE FOOT RF CABLE (F TO F PUSH/CONNECTOR)

INCORRECT PART NUMBERS

Intermittent Audio Distortion on Tape PB. Unstable Entrance Side RF Signal (C-Mech)

LANC Jig Software Update Version 2.1a Is Now Available.

LANC Jig Software Update Version 2.1b Now Available.

NEW MICROPROCESSOR FOR RM-95

New S-Reel Torque Specification (Type A mechanism).

NI-CAD BATTERY SERVICE

NO OPERATION OF TRACK SHIFT JIG

OPTICAL FILTER FOR CCD IMAGER

POLYPROPYLENE BATTERY CASE

S Reel Spacer for height adjustment. (B-Mech General)

Short Battery Life.

SUMMARY OF 8MM TAPE PROBLEMS AND POSSIBLE SOLUTIONS

Tape damage (eating) during REW

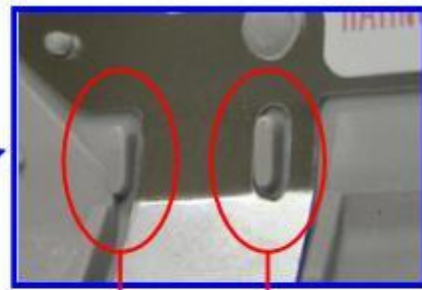
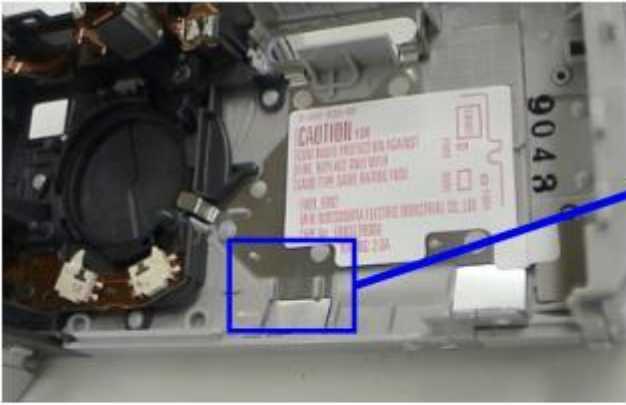
Did this information answer your question?

Yes

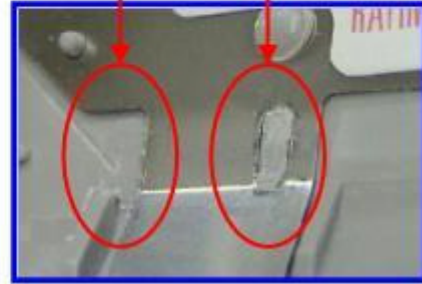
No

Comments:

Send



Clip off these ribs(2 spots)



1. Clip off the 2 in the Front Cabinet shown in the blue box
2. Cleaning off the terminal of the LCD flexible cable with alcohol.