



[Live Chat](#) | [Calendar](#) | [Members](#) | [Search](#) | [Help](#) | [Hag's House](#)

Logged in as: [FznYupr](#) ([Log Out](#))

[My Controls](#) · [View New Posts](#) · [My Assistant](#) · [My Friends](#) · [0 New Messages](#)



[Hag's House](#) > [Trail Camera & Video Game Camera Forums](#) > [Homemade Trail Camera](#)

3 Pages ▾ | 1 | 2 | 3 | >

Add Reply

New Topic

• **How to speed up S40 and quiet it down, 1/2 second quicker and a lot less lens movement**

Options ▾

[yetinme](#)

Dec 26 2006, 04:49 PM

Post #1



Advanced Member



Group: Advanced Members
Posts: 527
Joined: 2-September 03
From: SE Wisconsin hunt in
West Central Wisconsin
Member No.: 150

First and foremost, thanks to BadgerBuckHunter who got me started down this line of thinking on how to speed up the S40. Badger wanted me to try and switch the power to the S40 on and off with a control board so that the lens assembly would stay extended and speeds up the unit. Well, that didn't work out for me but it got me thinking and I found a different way to do the same thing.

Also thanks to Ghoot who developed the no SA hack.

What I found was that if I disabled the shutter cover, opened both shutter cover switches, and then controlled the closed cover switch with my board that I could shorten the shutter time of the camera by 1/2 a second. In addition, the lens doesn't fully retract when powered back on so the noise is a lot less. The lens will partially retract a little bit and then extend again but it is far less movement. I would like to find out where to hack into the lens assembly open switch but so far I haven't done it but I think we could eliminate all movement of the lens if I did.

The downside to the hack is that the camera can not be used outside the unit. The cover switch must be closed when the camera is powered on and open when the camera is powered off. With this hack, the switch is permanently open and so the camera must be turned on by the board.

Here is a document showing what I did and the chips will be available on my website soon. If you want to try it out, let me know I can make sure you get the right stuff ordered.

Check out the document and let me know what you think. If there is enough interest, I will start playing with the S600 next.

Mark

This post has been edited by [yetinme](#): Jan 1 2007, 11:21 PM

Attached File(s)

[Modification_document_for_the_Sony_DSC_S40.pdf](#) (1.54MB) Number of downloads: 299

YetiCam Game Cameras and Control Boards
Visit Us at www.yeticam.com

Report

MultiQ+

Quote ”

Top ↑

[phil](#)

Dec 26 2006, 05:07 PM

Post #2



Advanced Member
◆◆◆

Group: Members
Posts: 188
Joined: 14-October 06
From: PA
Member No.: 3,473

good info!! I will have to try this on the one I have waiting to be built.

Report MultiQ+ Quote " Top ↑



Advanced Member
◆◆◆

Group: Advanced Members
Posts: 387
Joined: 15-August 05
From: MQT MI
Member No.: 1,951

Dec 26 2006, 05:40 PM Post #3

Nice work Mark on both the mod and PDF!

One thing I was going to do and didn't yet was modify the barrel of the lens. See as the lens extends the barrel rotates and a slot on the barrel passes an optical sensor. This is how IMO the camera knows the lens has extended into the open position and retracted back to "home" closed position. I planned on creating a new opening in just the right spot on the barrel so that the lens would have to barely retract. This is just something I was thinking of... Perhaps you can see if it would help in your efforts at all.

Keep up the great work!

Travis

This post has been edited by **FznYupr**: Dec 26 2006, 05:44 PM



Report Edit MultiQ+ Quote " Top ↑



Advanced Member
◆◆◆

Group: Advanced Members
Posts: 527

Dec 26 2006, 06:28 PM Post #4


Travis,
Cool! I wasn't sure how the lens knew where it was. I will try to work on that approach. I hope that this can all be transferred over to the s600 but for now, the s40 is cheaper to experiment with.

Mark



Joined: 2-September 03
From: SE Wisconsin hunt in
West Central Wisconsin
Member No.: 150

[Report](#) [MultiQ+](#) [Quote](#) [Top](#)

 **tree sight**

Dec 26 2006, 06:48 PM Post #5



That looks great, and I think the s600 will be even easy'er to do this to. If the lens is moving very little then the camera can be refreshed more often without as much wear on the lens assembly and be able to achieve the fastest shutter times. No more waiting on the cap to charge, right? Could'nt a small switch be added to the camera case somewhere as a second cover switch to use the camera separate from the board? Again great job to everyone involved.

tree sight

Advanced Member



Group: Advanced Members
Posts: 359
Joined: 12-February 04
From: Missouri
Member No.: 370

[Report](#) [MultiQ+](#) [Quote](#) [Top](#)

 **wildebeast**

Dec 26 2006, 06:56 PM Post #6

Advanced Member



Group: Advanced Members
Posts: 1,515
Joined: 9-January 04
Member No.: 280

I was noticing on the 600 when the batteries go dead the lens will stay open, also when the batteries are removed. But when you put fresh batteries back in the cam it turns on with the lens out.

What if the power wire was used on the batteries to turn the cam off on?

Great work Mark.



Game Camera Photos & Tips

[Report](#) [MultiQ+](#) [Quote](#) [Top](#)

 **Hill Hopper**

Dec 26 2006, 07:49 PM Post #7



Great work!



Butch

Improve Domestic Animals' Quality of Life.....Euthanize PETA!

I'm an Engineer. Engineers build civilizations – I leave it to politicians to destroy them - Melanie

"First Leper in the Colony"



Group: Development Team
Member
Posts: 7,032
Joined: 17-July 03
From: NW Arkansas
Member No.: 3

Outdoor Ramblings Blog

Countdown to Arkansas Deer Season 2007

<http://www.timeanddate.com/counters/customcounter.html?month=10&day=01&year=2007&hour=&min=&sec=&p0=134>

[Report](#) [MultiQ+](#) [Quote ”](#) [Top ↑](#)

 **cybersniper**

Dec 27 2006, 12:40 AM Post #8



Very nice Mark 😊 I'm looking forward to the 600 😊



Click here to enter Trail Ghost Game Cameras

Stereo jack P41 and S600 mods available. \$35.00 for 600, \$27.00 for P41. This price includes parts and shipping back to you. We also do the new Yeti fast 600 mod.

We sell camo Python locks and memory sticks. You can have the Pythons keyed alike in quantities of 2-4 at no extra charge!

Advanced Member



Group: Advanced Members
Posts: 514
Joined: 17-August 04
Member No.: 754

[Report](#) [MultiQ+](#) [Quote ”](#) [Top ↑](#)

 **rsmith**

Dec 27 2006, 01:05 AM Post #9



QUOTE(wildebeast @ Dec 26 2006, 05:56 PM) →
I was noticing on the 600 when the batteries go dead the lens will stay open, also when the batteries are removed. But when you put fresh batteries back in the cam it turns on with the lens out.

What if the power wire was used on the batteries to turn the cam off and on?

Great work Mark.

Advanced Member



Group: Members
Posts: 130
Joined: 16-July 06
Member No.: 2,965

If the batteries are out long enough, doesn't the camera go back to the initial startup screen?

[Report](#) [MultiQ+](#) [Quote ”](#) [Top ↑](#)

 **gypsy**

Dec 27 2006, 01:05 AM Post #10



Advanced Member
◆◆◆

Group: Advanced Members
Posts: 589
Joined: 22-September 04
Member No.: 943

Wildebeast, good point.
A close and hold program for power up instead of pulse,
on the power wire of the battery compartment.
I'll try that with a d380 pwr-up chip and see what happens.

rsmith, good point,
we'd need to know the time out on this and set a quick refresh
just prior to this reset time.

gyp

This post has been edited by **gypsy**: Dec 27 2006, 01:13 AM

Report MultiQ+ Quote " Top ↑

 **Badgerbuckhunter**

Dec 27 2006, 03:31 AM Post #11



Advanced Member
◆◆◆

Group: Advanced Members
Posts: 655
Joined: 13-August 04
From: Wisconsin
Member No.: 738

Good job Mark!

◆◆◆
If your gonna be dumb, you better be tough. (A Quote from my Grandma Grimes)

Money isn't everthing.....But it sure does help!

Report MultiQ+ Quote " Top ↑

 **yetinme**

Dec 27 2006, 10:49 AM Post #12



Advanced Member
◆◆◆

Group: Advanced Members
Posts: 527
Joined: 2-September 03
From: SE Wisconsin hunt in
West Central Wisconsin
Member No.: 150

Tree - I had also thought about adding a small switch to the camera to open and close the cover switch. This would allow the camera to be used externally but it would be cumbersome. The swithc would need to connect the White wire to the Black Wire.

Cliff - Badger's idea was to control the power too. The issues I saw with it were:
The LCD will default to on once the batteries are removed (this will lower battery life)
The risk for getting the polarity mixed up when wiring in the "new" batteries is real and could burn up the camera
I am not sure the time saving would be as good since you would need to turn on the batteries and then wait to turn on the camera.

I can do a battery switching scheme for someone, just let me know and I can play with it again.

Mark

◆◆◆
YetiCam Game Cameras and Control Boards

Visit Us at www.yeticam.com

Report MultiQ+ Quote " Top ↑



wildebeast

Dec 27 2006, 11:16 AM Post #13

Yetinme .. I just tested the 600 for 8 pictures using the battery shut off.

Advanced Member
◆◆◆

I turned the camera on - then opened the battery door to shut the power off - then closed the door and turned on the power button, waited four seconds and took a picture. Did this 8 times in a row and the lens always stayed in the open position. But on powering up the cam I heard the shutter motor run as if it took this time to extend the lens, then shuttered a picture.

Group: Advanced Members
Posts: 1,515
Joined: 9-January 04
Member No.: 280

If there was a way to disconnect the motor I wonder if that would speed up the cam. It might be around 3 seconds if controlled by a board, but my big fingers on the shutter were slow 😊

At least it would cut down on all the lens movement and the shutter doors making all the noise.

cliff

◆◆◆
Game Camera Photos & Tips

Report MultiQ+ Quote " Top ↑



Badgerbuckhunter

Dec 30 2006, 12:35 PM Post #14



Mark, I was reading the posts and looking at your PDF closer and was wondering if you can install a dummy plug with a jumper between the black and white wires on your 4 wire external connector, then allowing camera use outside your game cam.

Advanced Member
◆◆◆

◆◆◆
If your gonna be dumb, you better be tough. (A Quote from my Grandma Grimes)

Money isn't everthing.....But it sure does help!

Group: Advanced Members
Posts: 655
Joined: 13-August 04
From: Wisconsin
Member No.: 738

Report MultiQ+ Quote " Top ↑



yetinme

Dec 30 2006, 02:43 PM Post #15



yeah, you could do that. I would think it would be easiest to have a second servo connector that would replace the cable to the board and would have the black to the white jumpered.

Advanced Member
◆◆◆

I will be updating the attached document today since I made a mistake with the solder jumper. The A,B&C should all be jumpered together.

Also, this mod will need a new chip to get the .5 second speed up.

Mark

Group: Advanced Members
Posts: 527
Joined: 2-September 03
From: SE Wisconsin hunt in
West Central Wisconsin
Member No.: 150

YetiCam Game Cameras and Control Boards
Visit Us at www.yeticam.com

[Report](#) [MultiQ+](#) [Quote ”](#) [Top ↑](#)

[Search Topic](#)

« Next Oldest · **Homemade Trail Camera** · Next Newest »

3 Pages ▾ | 1 | 2 | 3 | >

[Fast Reply](#) [Add Reply](#) [New Topic](#)

[Go](#)

Powered By IP.Board © 2007 IPS, Inc.
Licensed to: Hag's House

Skin by: [SbyD](#) © all rights reserved.

Lo-Fi Version

Time is now: 17th September 2007 - 08:26 PM



[Live Chat](#) | [Calendar](#) | [Members](#) | [Search](#) | [Help](#) | [Hag's House](#)

Logged in as: [FznYupr](#) (Log Out)

[My Controls](#) · [View New Posts](#) · [My Assistant](#) · [My Friends](#) · [0 New Messages](#)

[Hag's House](#) > [Trail Camera & Video Game Camera Forums](#) > [Homemade Trail Camera](#)

3 Pages ▾ < 1 2 3 >

[Add Reply](#) [New Topic](#)

• [How to speed up S40 and quiet it down, 1/2 second quicker and a lot less lens movement](#)

[Options ▾](#)

[yetinme](#)

Jan 1 2007, 11:22 PM

Post #16

New document is posted and the chip is on my website.

Mark

YetiCam Game Cameras and Control Boards
Visit Us at www.yeticam.com



Advanced Member

Group: Advanced Members
Posts: 527
Joined: 2-September 03
From: SE Wisconsin hunt in West Central Wisconsin
Member No.: 150

[Report](#)

[MultiQ+](#)

[Quote ”](#)

[Top ↑](#)

[FznYupr](#)

Jan 2 2007, 02:12 PM

Post #17

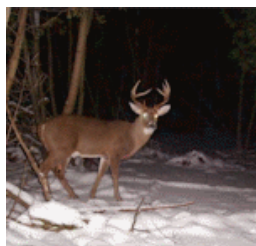
Mark,

I got my S40's from the woods and have been testing them, this is definiatly a mod all my units in the future will get. Currently I have SSS boards. I don't have an S600 here but I see no reason this cannot be applied to it as well... Hopefully it will act the same on power off.

Here is a video clip of a comparison. [S40 Quick Start mod by Yetinme](#) 200k 17 seconds Shouldn't be too bad for dialup'ers

I'm sure times could be increase a little more with the help of a controller as my power off's are guesstimates.

This post has been edited by [FznYupr](#): Jan 2 2007, 02:14 PM



Advanced Member

Group: Advanced Members
Posts: 387
Joined: 15-August 05
From: MQT MI
Member No.: 1,951





Report Edit MultiQ+ Quote " Top ↑

yetinme

Jan 2 2007, 03:19 PM Post #18



No Avatar

Advanced Member



Group: Advanced Members
Posts: 527
Joined: 2-September 03
From: SE Wisconsin hunt in West Central Wisconsin
Member No.: 150

I have a S600 here to play with and may get the chance tonight but no promises. Sometimes my 4 year old has a little different schedule than I do and I think he said we were going to build a bird feeder tonight...

mark



YetiCam Game Cameras and Control Boards
Visit Us at www.yeticam.com

Report MultiQ+ Quote " Top ↑

FznYupr

Jan 5 2007, 07:57 PM Post #19



Advanced Member



Group: Advanced Members
Posts: 387
Joined: 15-August 05
From: MQT MI
Member No.: 1,951

Here's an example of a P41 SSS 1sec shutter vs. S40.

P41 130ms to 380ms faster Depends where in refresh cycle the S40 is.

S40 vs P41 500K 7sec



Report Edit MultiQ+ Quote " Top ↑

treetop

Jan 5 2007, 09:32 PM Post #20



Travis the example looks super. Again Thanks for the hard work



For Trail Camera parts, accessories, build pdfs and links to other good sites and information

Check us out at <http://www.bfoutdoors.com/>

Advanced Member



Group: Development Team
Member
Posts: 3,490
Joined: 24-July 03
Member No.: 74

<http://www.huntingfootage.com/showgallery...=&whenterm=>

Report MultiQ+ Quote ” Top ↑



Jan 5 2007, 11:07 PM

Post #21



Just want to add the above test is with lower light when a flash was needed. In total darkness the camera takes up to 2200ms (maybe a little more Not for sure) to acquire the picture after it gets the shutter pulse.

I didn't yet measure the P41 to see how it compares. I sure it was done some where though.

☺ Having fun yet? I am.

Advanced Member



Group: Advanced Members
Posts: 387
Joined: 15-August 05
From: MQT MI
Member No.: 1,951



Report Edit MultiQ+ Quote ” Top ↑



Jan 6 2007, 03:31 PM

Post #22



DANG YOU Mark and Travis! Now I'm gonna have to get off my tail and get a 4 wire mod figured out on my board. ☺ That is some really good stuff there. It didn't really register how much faster it is until I saw that video. GOOD JOB GUYS!



g-hoot
Snapshot Sniper [Full Units](#) - [Controller Boards](#) and [CAMO CASES](#)

Advanced Member



Group: Advanced Members
Posts: 1,394
Joined: 18-July 03
From: Duncan, OK

Member No.: 34

Report MultiQ+ Quote ” Top ↑

 **yetinme**

Jan 6 2007, 04:40 PM Post #23



Gary,
If it helps, they all share one common.

Mark


YetiCam Game Cameras and Control Boards
Visit Us at www.yeticam.com

Advanced Member


Group: Advanced Members
Posts: 527
Joined: 2-September 03
From: SE Wisconsin hunt in
West Central Wisconsin
Member No.: 150

Report MultiQ+ Quote ” Top ↑

 **ghoot**

Jan 6 2007, 04:57 PM Post #24



Yes, that helps a lot. The fewer extra pins that I have to come up with, the better since the LCD on my board uses a bunch of them. I think I may have figured out how to get two extra pins today, so the Sniper board may be able to control the S40 and refresh a slave soon. Thanks for shaking things up and getting my mind going on this again. 😊


g-hoot
Snapshot Sniper Full Units - Controller Boards and CAMO CASES

Advanced Member


Group: Advanced Members
Posts: 1,394
Joined: 18-July 03
From: Duncan, OK
Member No.: 34

Report MultiQ+ Quote ” Top ↑

 **FznYupr**

Jan 6 2007, 05:32 PM Post #25



Advanced Member



Group: Advanced Members
Posts: 387
Joined: 15-August 05
From: MQT MI
Member No.: 1,951

Now if there were only a way to get around that pesky autofocus to speed up night time photos. 🙄 😊

QUOTE

Thanks for shaking things up and getting my mind going on this again. smile.gif

I agree. Thanks Mark! 😊



Report

Edit

MultiQ+

Quote ”

Top ↑

Jan 6 2007, 06:39 PM

Post #26

ghoot



Advanced Member



Group: Advanced Members
Posts: 1,394
Joined: 18-July 03
From: Duncan, OK
Member No.: 34

QUOTE

Now if there were only a way to get around that pesky autofocus to speed up night time photos.

Hey now! Don't go adding another wire to the mix! 🙄 🙄 😊

g-hoot

[Snapshot Sniper](#) [Full Units](#) - [Controller Boards](#) and [CAMO CASES](#)

Report

MultiQ+

Quote ”

Top ↑

Jan 6 2007, 07:03 PM

Post #27

ghoot



Advanced Member



Group: Advanced Members
Posts: 1,394

Well, IT WORKS! Couldn't get it to work at 1st, because I'm using one of my pins going to a button so it's waiting for an interrupt. Well, I was looking in my PIC book and on the High and Low commans in says that the pin is automatically set to an output when you issue one of those commands. DUH! That's why I was never able to make it work for a slave flash in the past. All I had to do was reset it as an input after it's through doing it's thing. I haven't tried to nail down the perfect timing like you guys have done, but the S40 I'm testing triggers consistently using the 1.2 second shutter setting. Of course I'm having to add a second opto. So now I'm off to get that other pin working for a slave refresh, and then I'll order some little boards that I can stack on to the original to run the extra opto. COOL! Hope I'm not highjacking this thread, just getting a little excited.

This post has been edited by **ghoot**: Jan 6 2007, 07:07 PM

Joined: 18-July 03
From: Duncan, OK
Member No.: 34

g-hoot
Snapshot Sniper [Full Units](#) - [Controller Boards](#) and [CAMO CASES](#)

[Report](#) [MultiQ+](#) [Quote ”](#) [Top ↑](#)

 **Mibucks**

Jan 6 2007, 08:25 PM Post #28



Good Work Gary..... you got that all figured out quick.

Regarding these alleged S40's with little to no lens movement and P41 speed.... why didn't anyone figure this out earlier?
Like 2 years earlier when we started hacking them.

Great job to everyone who helped figure this out, especially Yeti and Fzn. Hopefully there aren't any downfalls to this hack down the road, which kicks the S40 right up there with the beloved P41 IMO, at least if you are strictly interested in a trail cam.

Advanced Member
◆◆◆

Group: Advanced Members
Posts: 381
Joined: 21-September 04
From: Mid-Michigan
Member No.: 927

Speak softly and carry a big stick; you will go far.
-Teddy Roosevelt

MR DUCKS
MR NOT
OSMR
CM WANGS
LIB
MR DUCKS

[Report](#) [MultiQ+](#) [Quote ”](#) [Top ↑](#)

 **FznYupr**

Jan 6 2007, 08:51 PM Post #29



QUOTE(tree sight @ Dec 26 2006, 06:48 PM) →

If the lens is moving very little then the camera can be refreshed more often without as much wear on the lens assembly and be able to achieve the fastest shutter times. No more waiting on the cap to charge, right? tree sight

BTW - NO lens movement anymore on a refresh!! 📷

Advanced Member
◆◆◆

Group: Advanced Members
Posts: 387
Joined: 15-August 05
From: MQT MI
Member No.: 1,951

QUOTE

Hope I'm not highjacking this thread, just getting a little excited.

Great work Gary! This is Hags House and from the little I know about the history this is why this place was created and this is a great example of what teamwork is all about!

This post has been edited by **FznYupr**: Jan 6 2007, 08:53 PM





Report Edit MultiQ+ Quote " Top ↑

Hill Hopper

Jan 6 2007, 08:58 PM Post #30



QUOTE This is Hags House and from the little I know about the history this is why this place was created and this is a great example of what teamwork is all about!

I think you hit the nail on the head.



Butch

Improve Domestic Animals' Quality of Life.....Euthanize PETA!

I'm an Engineer. Engineers build civilizations – I leave it to politicians to destroy them - Melanie

Outdoor Ramblings Blog

Countdown to Arkansas Deer Season 2007 http://www.timeanddate.com/counters/customcounter.html?month=10&day=01&year=2007&hour=&min=&sec=&p0=134

Report MultiQ+ Quote " Top ↑

Enter Keywords Search Topic

< Next Oldest · Homemade Trail Camera · Next Newest >

3 Pages < 1 2 3 >

Fast Reply Add Reply New Topic

|-- Homemade Trail Camera Go

Powered By IP.Board © 2007 IPS, Inc. Licensed to: Hag's House

Skin by: SbyD © all rights reserved.

Club English

Lo-Fi Version

Time is now: 17th September 2007 - 08:26 PM



[Live Chat](#) | [Calendar](#) | [Members](#) | [Search](#) | [Help](#) | [Hag's House](#)

Logged in as: [FznYupr](#) ([Log Out](#))

[My Controls](#) · [View New Posts](#) · [My Assistant](#) · [My Friends](#) · [0 New Messages](#)



[Hag's House](#) > [Trail Camera & Video Game Camera Forums](#) > [Homemade Trail Camera](#)

3 Pages ▾ < 1 2 3

[Add Reply](#) [New Topic](#)

• **How to speed up S40 and quiet it down, 1/2 second quicker and a lot less lens movement**

[Options ▾](#)

[yetinme](#)

Jan 7 2007, 12:32 AM

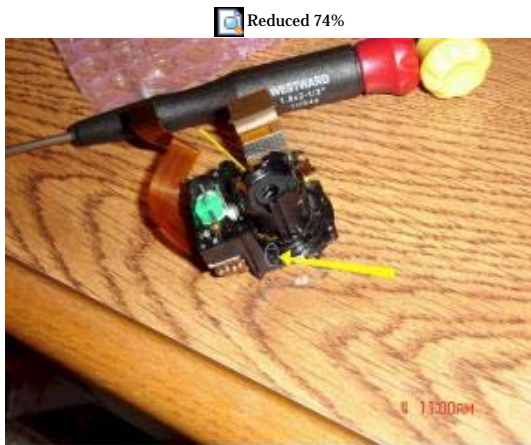
Post #31



Advanced Member
◆◆◆

Group: Advanced Members
Posts: 527
Joined: 2-September 03
From: SE Wisconsin hunt in West Central Wisconsin
Member No.: 150

Now the bad news. I was playing around with the optical switches Travis found so we could try to figure out how to keep the lens from moving at all and it doesn't look promising. I have the pins on the connector figured out and I think we know how they work but there is just no place to solder to. These things are mounted on a ribbon cable and then come out to pins on the flex cable. This picture is one from Travis showing where the switches are at.



1152 x 864 (216.4K)

Mark

◆◆◆
YetiCam Game Cameras and Control Boards
Visit Us at www.yeticam.com

[Report](#) [MultiQ+](#) [Quote ”](#) [Top ↑](#)

[FznYupr](#)

Jan 7 2007, 07:20 PM

Post #32



Advanced Member



Group: Advanced Members
 Posts: 387
 Joined: 15-August 05
 From: MQT MI
 Member No.: 1,951

The contacts in there are about as big as fly poop.

On a nother note. I tested the S40 in total darkness in the basement. 13 yards to far wall.

This is were the s40 cannot compete with the P41 but total darknees speed has improved to 3.21 seconds. Not too bad. what do you think?

Click on picture to play video. 530k 23seconds

[attachment=23206:attachment]

Travis



Report

Edit

MultiQ+

Quote ”

Top ↑

 **Mibucks**

Jan 7 2007, 08:56 PM

Post #33



Advanced Member



Group: Advanced Members
 Posts: 381
 Joined: 21-September 04
 From: Mid-Michigan
 Member No.: 927

Well, I got curious and started ripping into one of these as well.

From what I'm seeing, a mechanical way of tricking the cam may be a possibility. The only problem with Travis's idea about the bottom ring is that the complete motion seems to go from one optical sensor to the next, would the cam ignore the fact that it went through 1/4 the work it normally would to get to that point?

Also, I wouldn't dismiss soldering to the pins on the ribbon cable if you've figured out how to manually do it. Some of that stuff is a whole lot tougher than you'd think.

I was also thinking that not only does this assembly tell the cam when the lens is in or out, but also exactly where it currently is through it's range of motion. Would messing with that have any adverse affects on focus, among other things?

Assuming the cam uses **only** those sensors at the bottom of the barrel to determine the position of the lenses, it looks as though we can mechanically lock out the lens assembly by simply removing the pins on the two inner assemblies at a optimum extension point and securing them to the 3 guide rails. The outer ring would just spin at that point and the cam would think all's well..... but I feel that this is one of those things that works really well in my head and no where else. Obviously I'm not as well versed as you guys when it comes to this stuff, but it's still fun to try.

Attached thumbnail(s)



640 x 480 (64.66K)



640 x 480 (74.38K)

◆◆◆
Speak softly and carry a big stick; you will go far.
-Teddy Roosevelt

MR DUCKS
MR NOT
OSMR
CM WANGS
LIB
MR DUCKS

[Report](#) [MultiQ+](#) [Quote ”](#) [Top ↑](#)

 **FznYupr**

Jan 7 2007, 10:23 PM Post #34



Advanced Member



Group: Advanced Members
 Posts: 387
 Joined: 15-August 05
 From: MQT MI
 Member No.: 1,951

Good Info Mlbucks,

Maybe another thing to try is with the lens disassembled connect it back up to the camera, power up and start passing something through the sensor(s) manually to determine if both are used or not?

Travis



Report

Edit

MultiQ+

Quote ”

Top ↑

Jan 7 2007, 11:29 PM

Post #35



Advanced Member



Group: Members
 Posts: 130
 Joined: 16-July 06
 Member No.: 2,965

I wish I had a dead one to take apart so I could really picture what you guys are talking about.

Having trouble following the shutter switch sequence. Can anyone explain? Any way to use a jumper from the internal signal to the lens cover motor to either enable the camera to be used manually or eliminate the need for a 4th wire? Shouldn't there be a signal to use there after power off?

Report

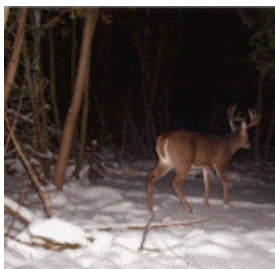
MultiQ+

Quote ”

Top ↑

Jan 8 2007, 09:15 AM

Post #36



Advanced Member



QUOTE(rsmith @ Jan 7 2007, 11:29 PM) ↩

I wish I had a dead one to take apart so I could really picture what you guys are talking about.

Having trouble following the shutter switch sequence. Can anyone explain? Any way to use a jumper from the internal signal to the lens cover motor to either enable the camera to be used manually or eliminate the need for a 4th wire? Shouldn't there be a signal to use there after power off?

The shutter switch signal works the similar to the power signal logic it's just closed the whole time not pulsed. Have to use the 4th wire.

Group: Advanced Members
Posts: 387
Joined: 15-August 05
From: MQT MI
Member No.: 1,951

Not sure what you mean with this question :

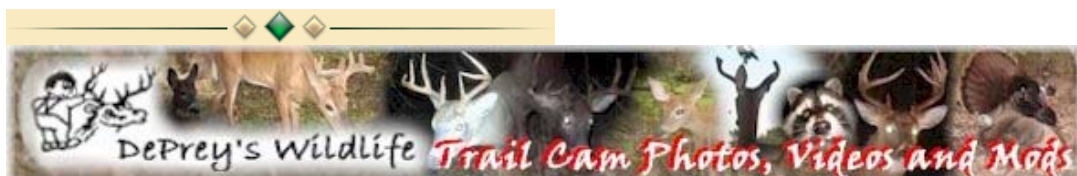
QUOTE

Shouldn't there be a signal to use there after power off?

Travis

Edited statement made a mistake.

This post has been edited by **FznYupr**: Jan 8 2007, 10:43 PM



Report Edit MultiQ+ Quote ” Top ↑

rsmith

Jan 8 2007, 08:15 PM

Post #37



When does the board open and close the closed cover switch?

What I meant with the signal after power is could the open cover switch be closed with a signal from the motor after the power is shut off? It would then be opened after the power is turned on. That's the normal sequence. Or does this switch need to be open at power on to get the benefit?

Advanced Member



Don't mean to waste you guys' time - I don't know much about electronics!

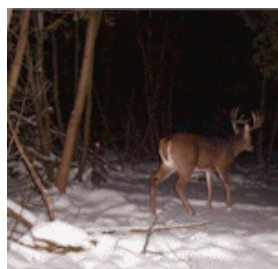
Group: Members
Posts: 130
Joined: 16-July 06
Member No.: 2,965

Report MultiQ+ Quote ” Top ↑

FznYupr

Jan 8 2007, 09:09 PM

Post #38



QUOTE(rsmith @ Jan 8 2007, 08:15 PM) ↩

When does the board open and close the closed cover switch?

Close it at power on and release at power off

QUOTE

Advanced Member



Group: Advanced Members
Posts: 387
Joined: 15-August 05
From: MQT MI
Member No.: 1,951

What I meant with the signal after power is could the open cover switch be closed with a signal from the motor after the power is shut off? It would then be opened after the power is turned on. That's the normal sequence. Or does this switch need to be open at power on to get the benefit?

Don't mean to waste you guys' time - I don't know much about electronics!

We are making the open switch at power up so the camera thinks it can extend the lens and we are releasing it at power off so it doesn't retract back in the camera like it currently does.

I think it has to be a four-wire mod though. That's the only way you can prevent any lens movement on a refresh. So now with Marks mod the lens doesn't have to move on a refresh saving on the "wear and tear" of the lens.

Make sense?

Travis



Report Edit MultiQ+ Quote " Top ↑

Enter Keywords

Search Topic

« Next Oldest · **Homemade Trail Camera** · Next Newest »

3 Pages ▾ < 1 2 3

Fast Reply

Add Reply

New Topic

|-- Homemade Trail Camera

Go

Powered By IP.Board © 2007 IPS, Inc.
Licensed to: Hag's House

Skin by: [ShyD](#) © all rights reserved.

Club

English

Lo-Fi Version

Time is now: 17th September 2007 - 08:27 PM