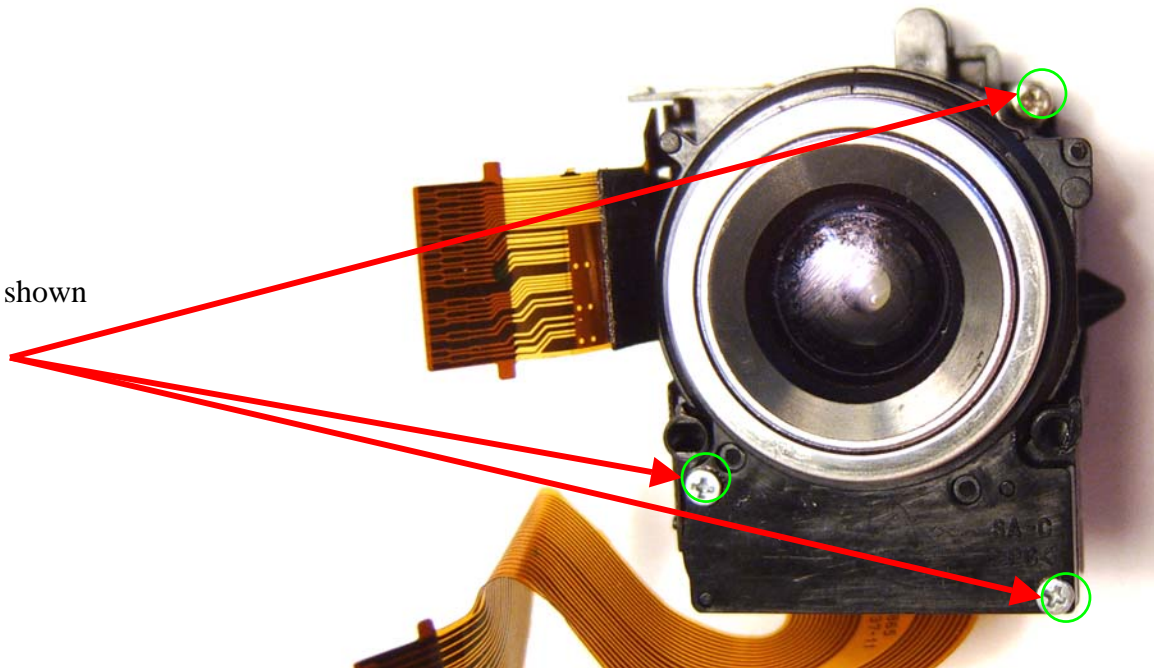


# Sony S40 IR Conversion MOD

I take no responsibility if you damage your camera. These instructions are only what I did to modify my cameras and are reference only. Modifying you camera will most likely void the manufacture warranty!! FznYupr

**BETA VERSION**

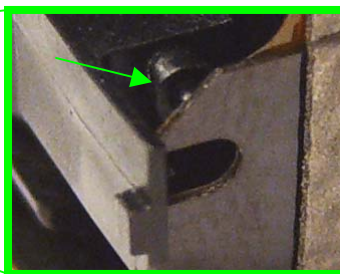
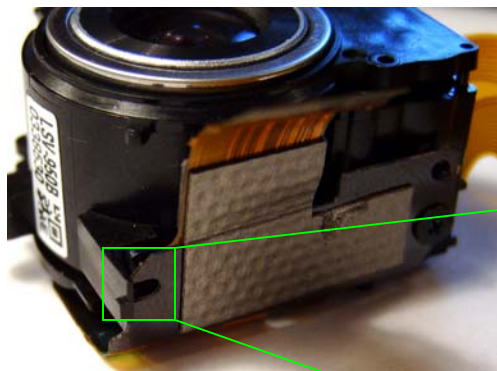
1. Remove three screws shown



2. Remove lens housing. Split the two with a razor blade and gently split apart.

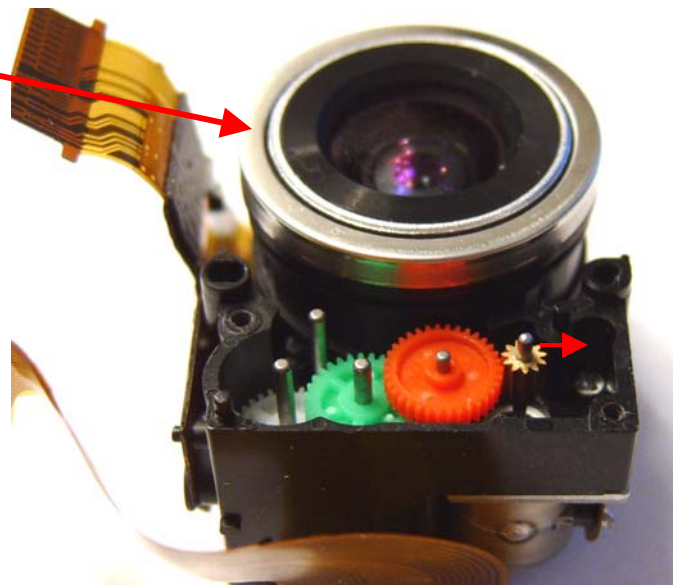


You must also separate the ribbon from the lens-housing nipple as you are splitting them!



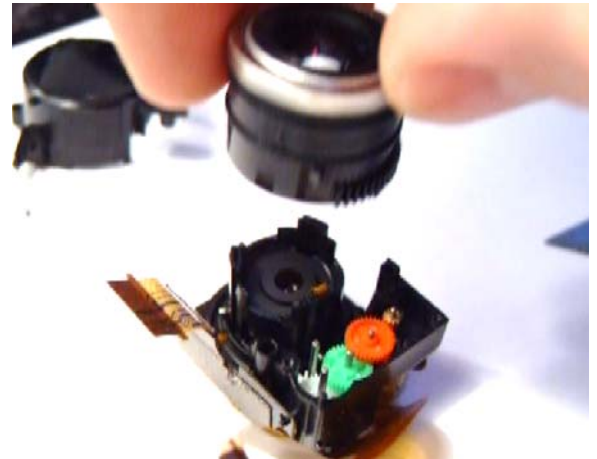
3. To remove the lens cylinder gently rotate counter clockwise then gently lift up.

When you lift up there will probably be two pieces **SOMETIME THE THIRD PART GETS STUCK AND COMES WITH TOO.** Be gentle very delicate ribbon cables in here

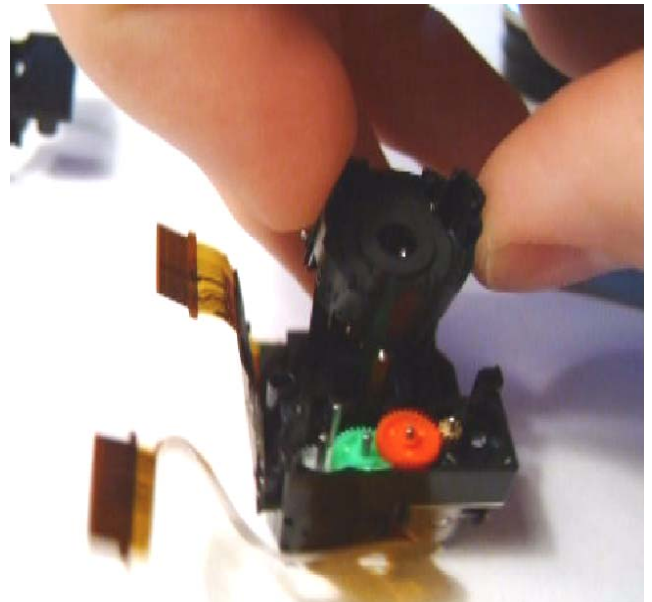
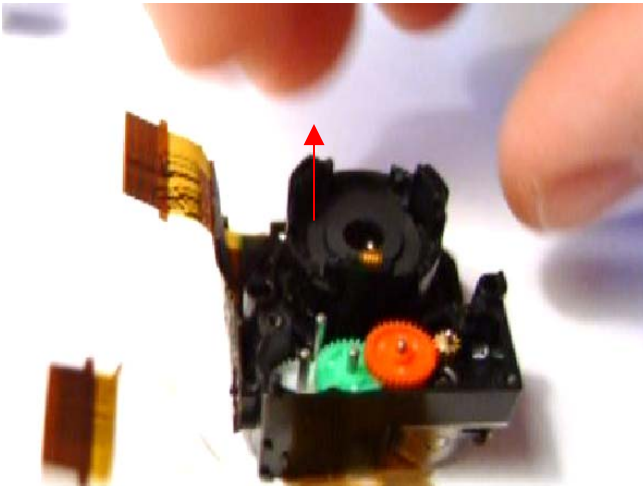


4. You may have to push the motor shaft out of the way in to allow the gear to move, or you can pop off the red gear.

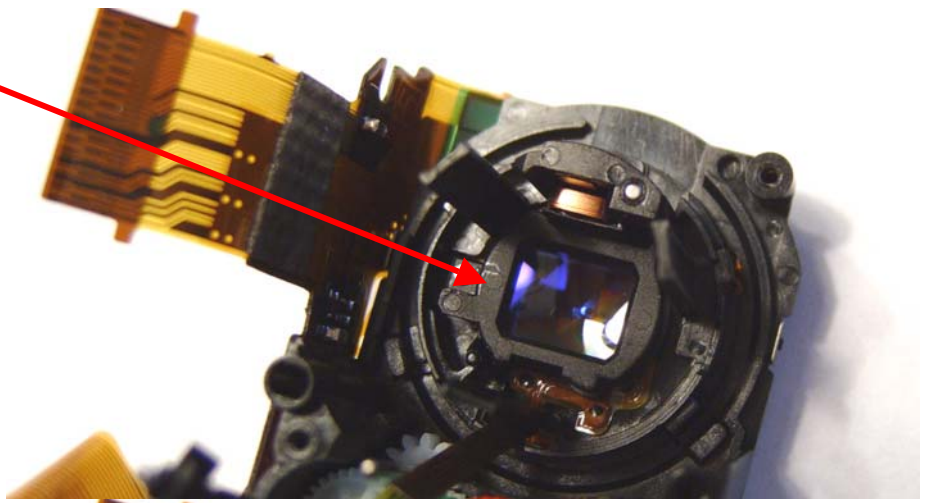
5. Lift the lens cylinder up and out of the way. There are two parts here one is inside the other.



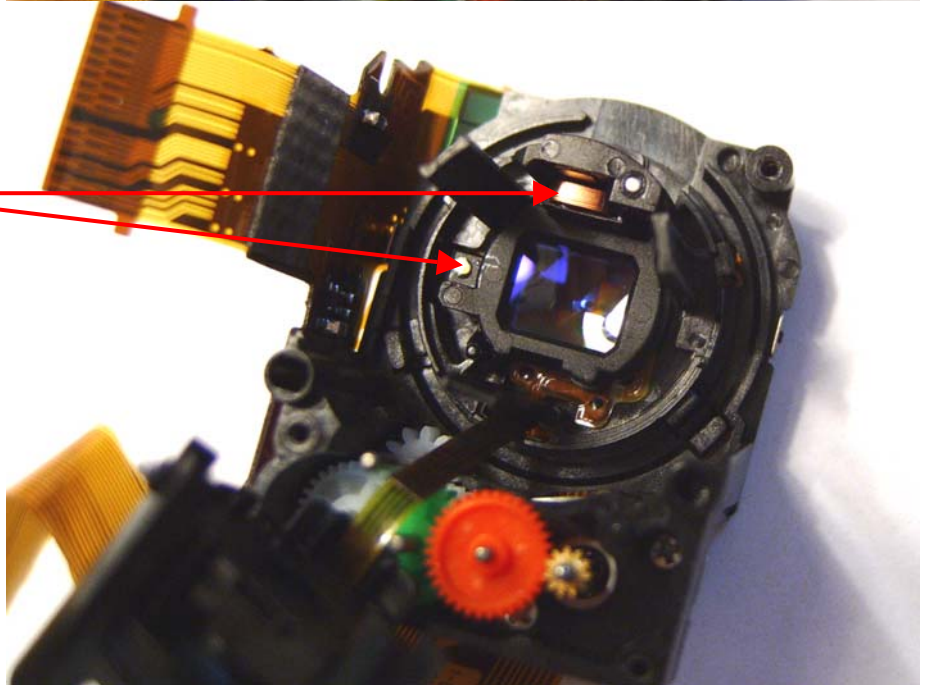
6. Move this assembly up and out of the way. **Be careful there is a small delicate cable attached to it.**



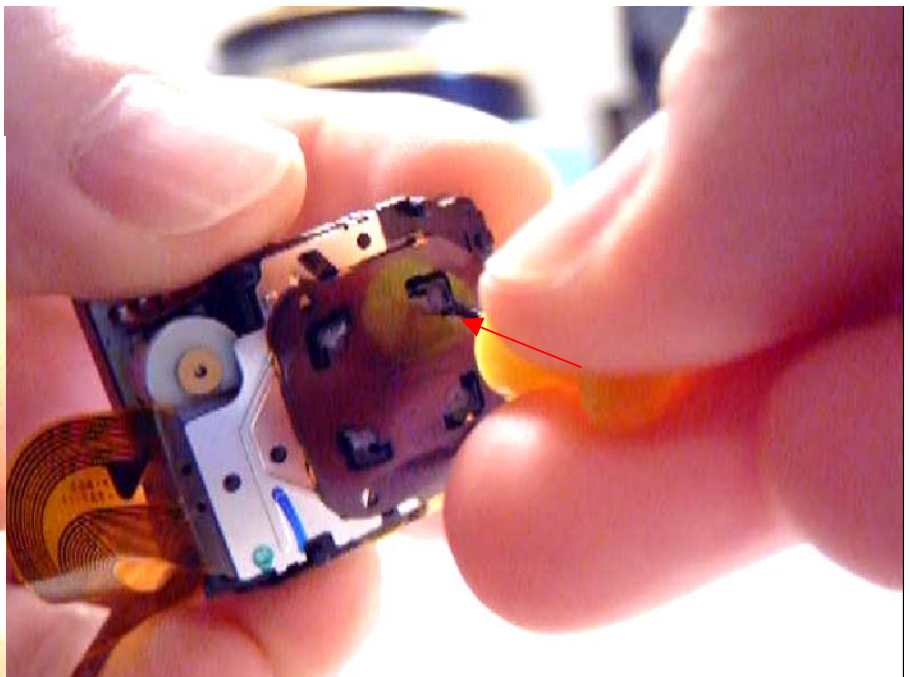
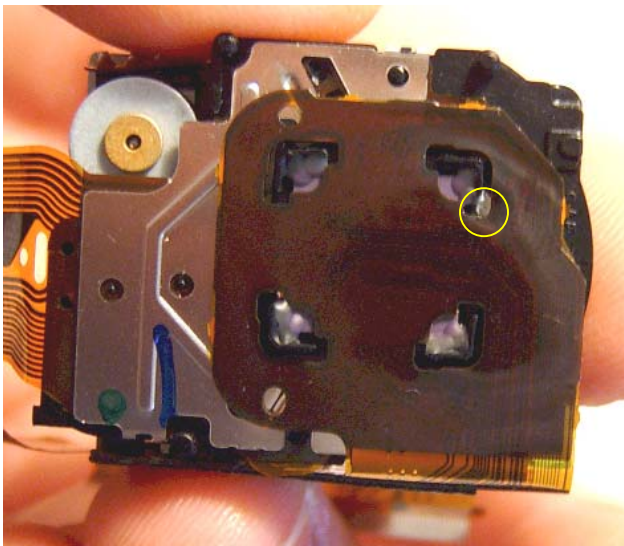
7. The IR Cut filter is under this assembly.



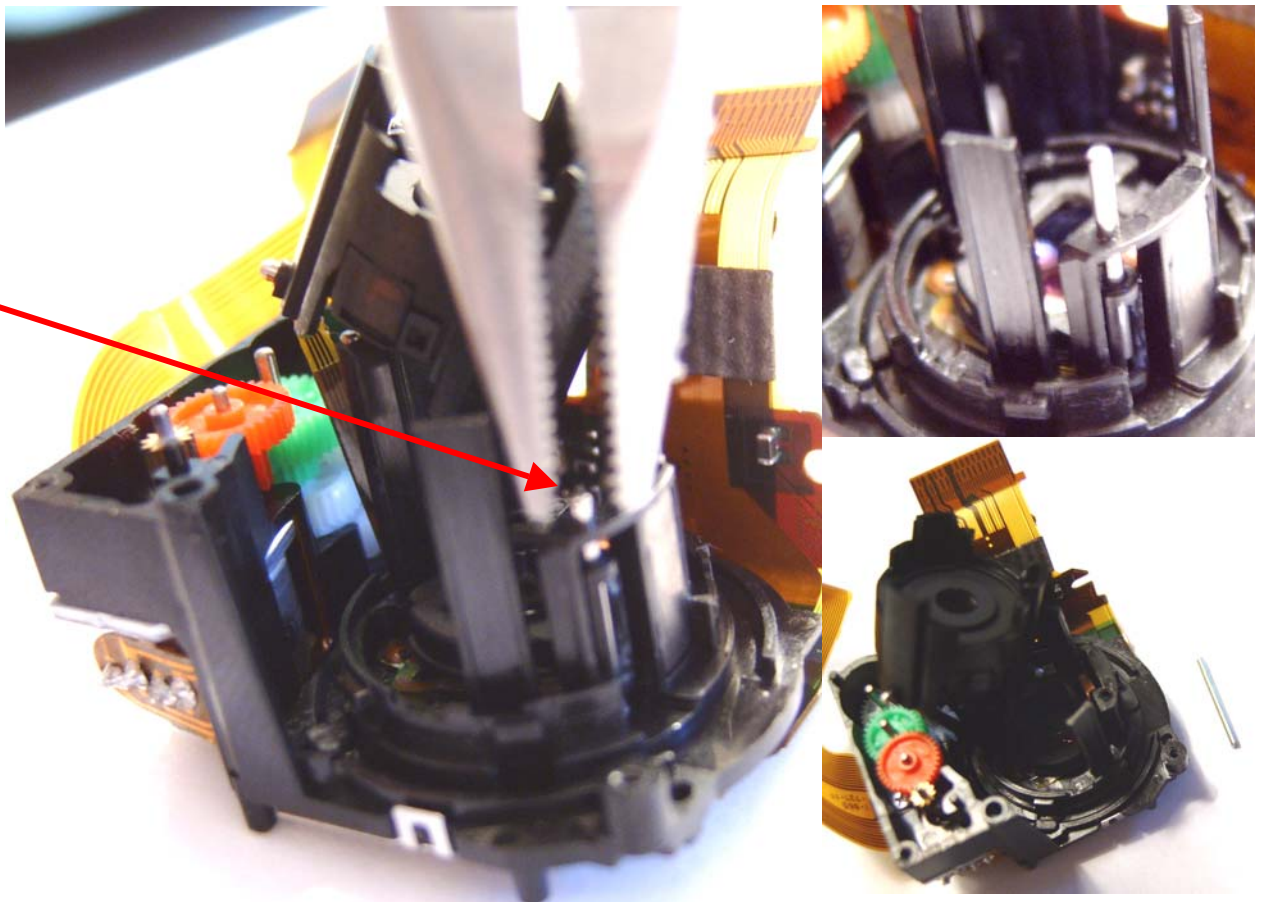
8. To remove the focus assembly we have to remove the holding pin. **CAUTION VERY STRONG MEGNETS**



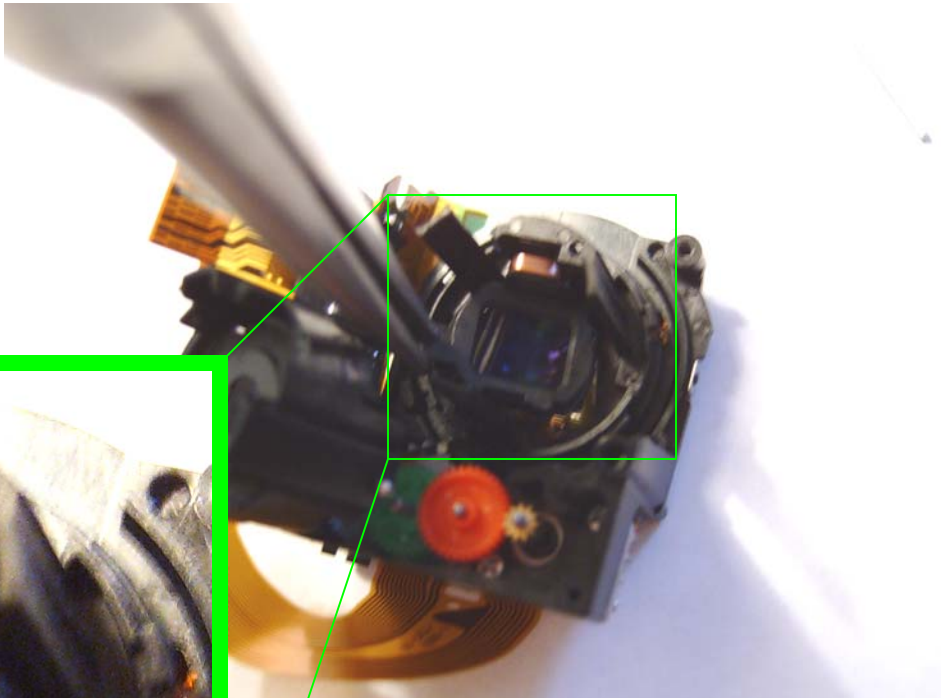
9. To remove this assembly we have to pop the holding pin out. I used a thumbtack to pop it out.



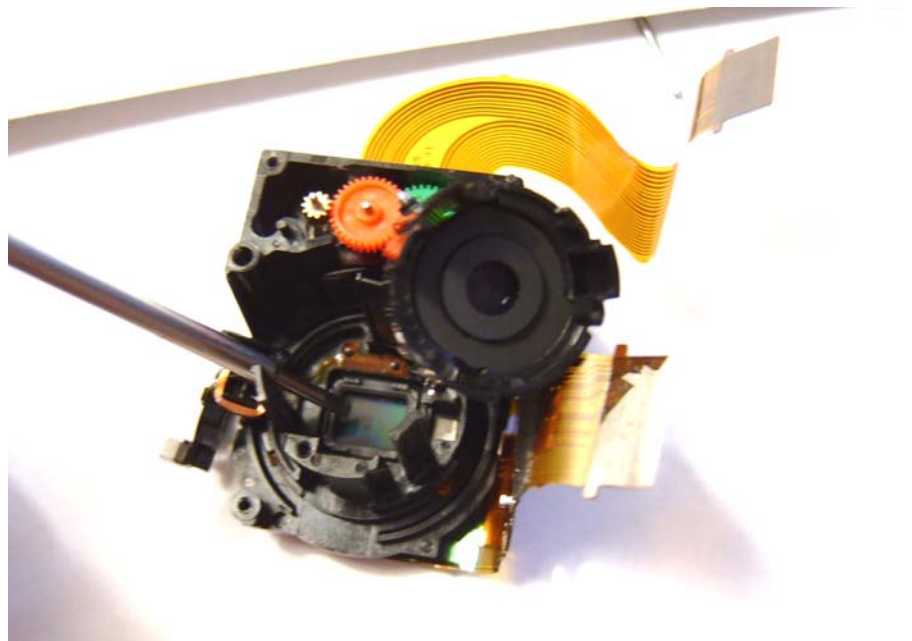
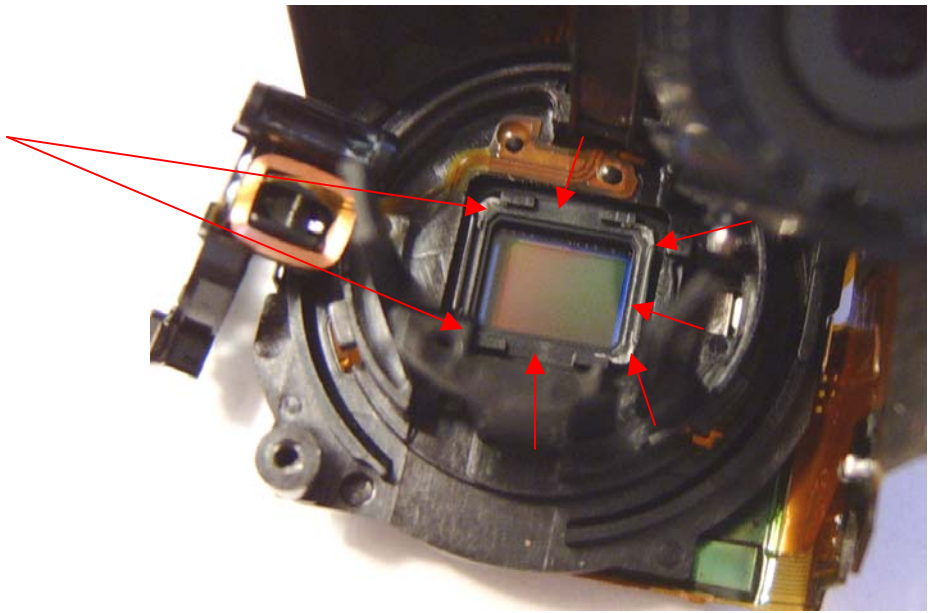
10. Pull out the rod



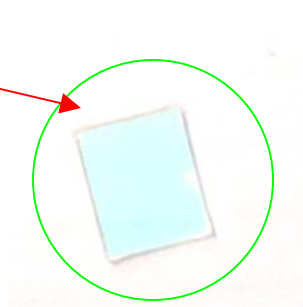
10. Gently remove the focus assembly out of the way. There is an even smaller ribbon cable on this assembly!!  
**CAUTION VERY STRONG MEGNETS WILL MAKE IT A LITTLE TRICKY. THE ASSEMBLY TENDS TO ATTACH TO YOUR WORK TOOL SO MOVE SLOW AND BE CAREFUL**



11. Gently rock each corner and side of the IR Cut filter. Do this many times and eventual the filter will let loose from its adhesive. (The filter is already removed in this picture)



12. Here is the IR Cut filter.



13. Use a tweezers and drop in the replacement glass
14. Use a pin and apply a dab of Nail polish (black) to the corners of the glass. Use small amounts to avoid a drip let it sit for 10 minutes or so till it cures.
15. Re-assemble making sure all ribbon cables are returned as they were prior to this mod. Follow mod in reverse order Use care when moving the fragile flex-cables