

Sony S40 Shutter connection

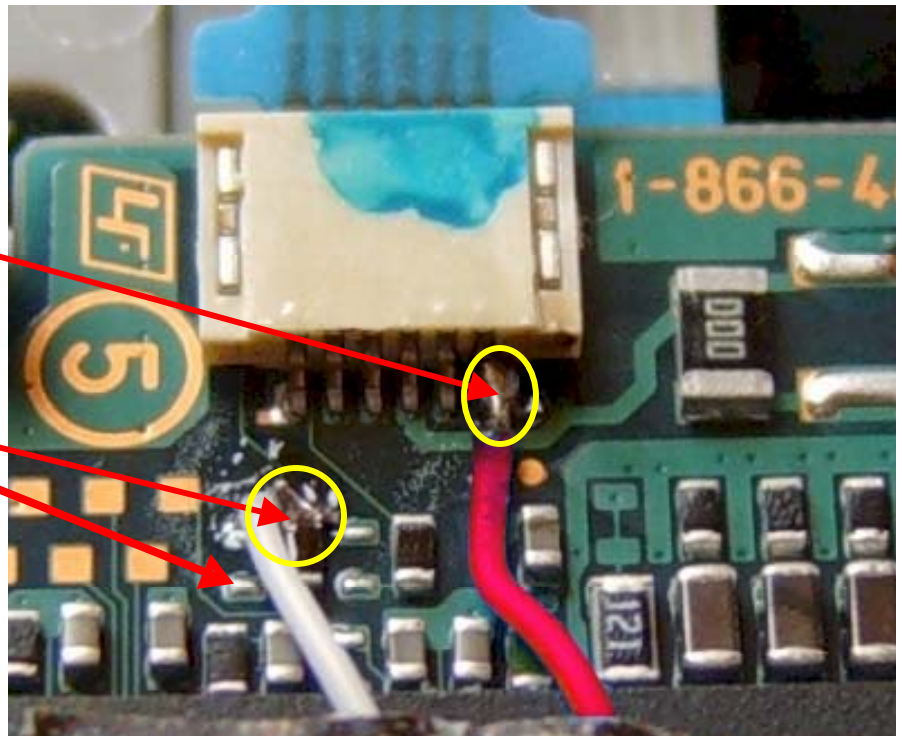
I take no responsibility if you damage your camera. These instructions are only what I did to modify my cameras and are reference only. Modifying you camera will most likely void the manufacture warranty!! Fznyupr

Prerequisites:

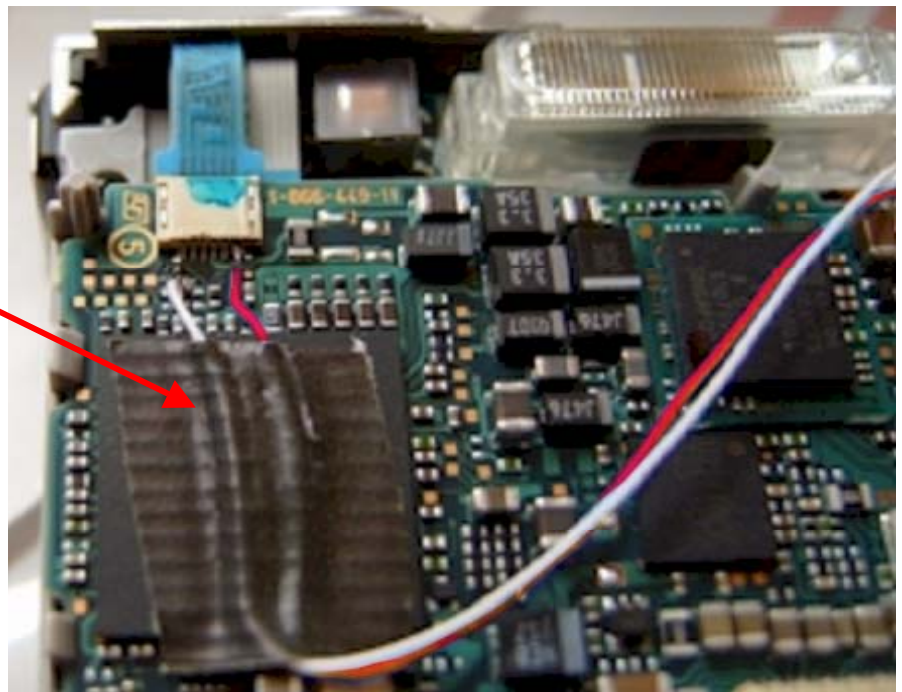
1. Small tip on your Iron is a MUST.
2. Batteries are removed!
3. IMO soldering is an Art. Patience and a steady hand are a must. I would recommend a shutter assembly from Hags House for those who are inexperienced or not comfortable with this solder job.
4. 30 AWG wire

The pin furthest to the right is the Refresh contact.
Red = Refresh

The first component second location
Is the Shutter.
White = Shutter



Secure the wires with some tape



And....



Run the shutter and power/(refresh) connectors to the jack of your choice.

Common is found at the USB connection
You can solder to either one of the two
points circled in green

