

# Sony S40 USB Camera Modification

I take no responsibility if you damage you camera. These instructions are only what I did to modify my camera's and are reference only. Modifying you camera will most likely void the manufacture warranty!! Fznyupr

PERFORMING THIS MOD MEANS YOU CAN NO LONGER DOWNLOAD YOUR PICTURES TO YOUR COMPUTER VIA THE USB CONNECTOR ON THE CAMERA. YOU WILL NEED A CARD READER

## Prerequisite:

1. The shutter and refresh wires are connected and routed to the back of the camera.
  2. Battries are removed.
1. The **common** for the USB connector is the silver housing around the connector. Thus no need to have a third wire. Figure 1 shows the common.

I took the pictures after the mod hence the touch-up.

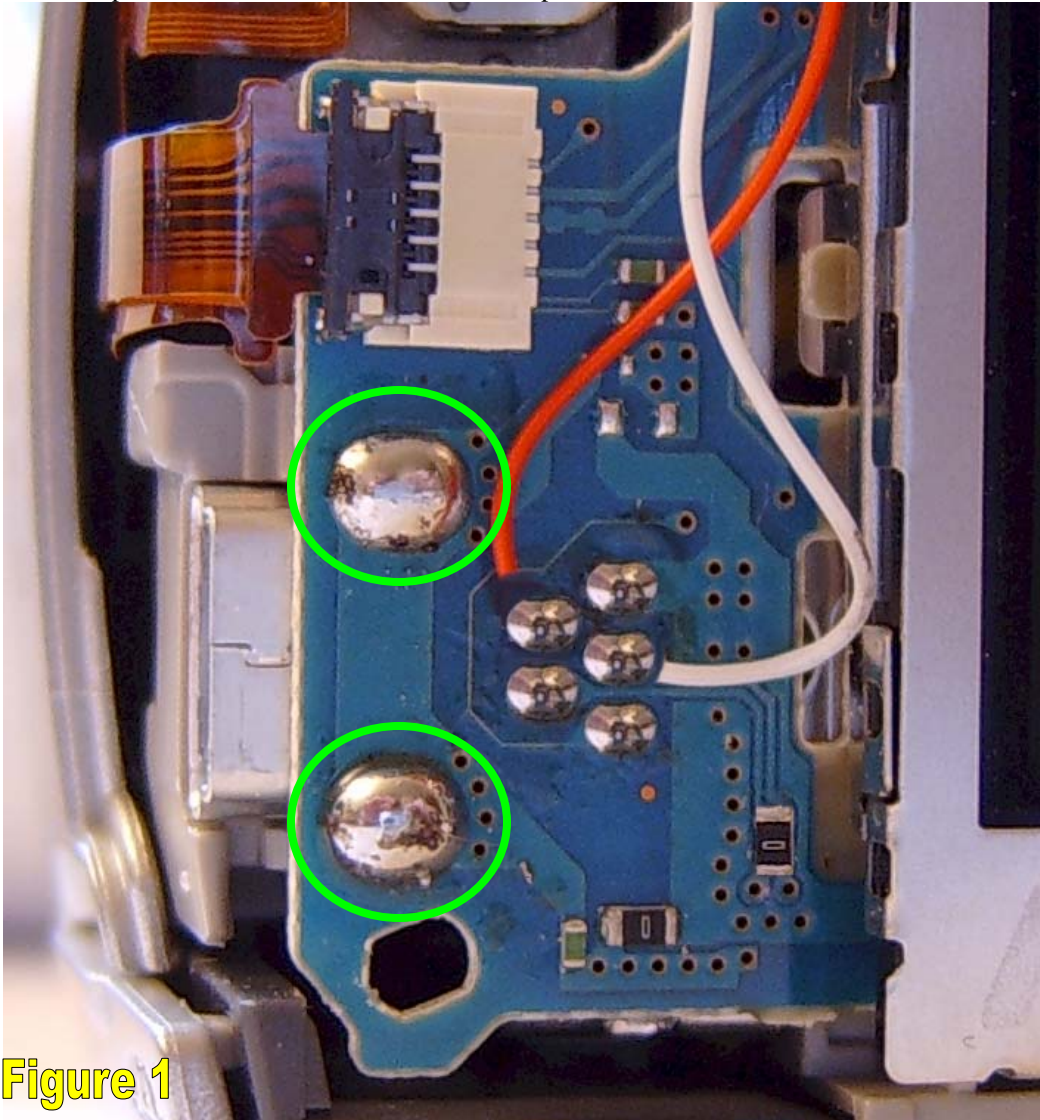


Figure 1

2. We need to remove one of the surface mounted components circled below. Using the side of your iron momentarily touch and then gently push the surface mounted component off. **Do each side slowly working it off.** Circled in RED
3. Make sure there are no solder bridges marked by the circle in YELLOW. Yes, It's the same circle. Double check your work!!

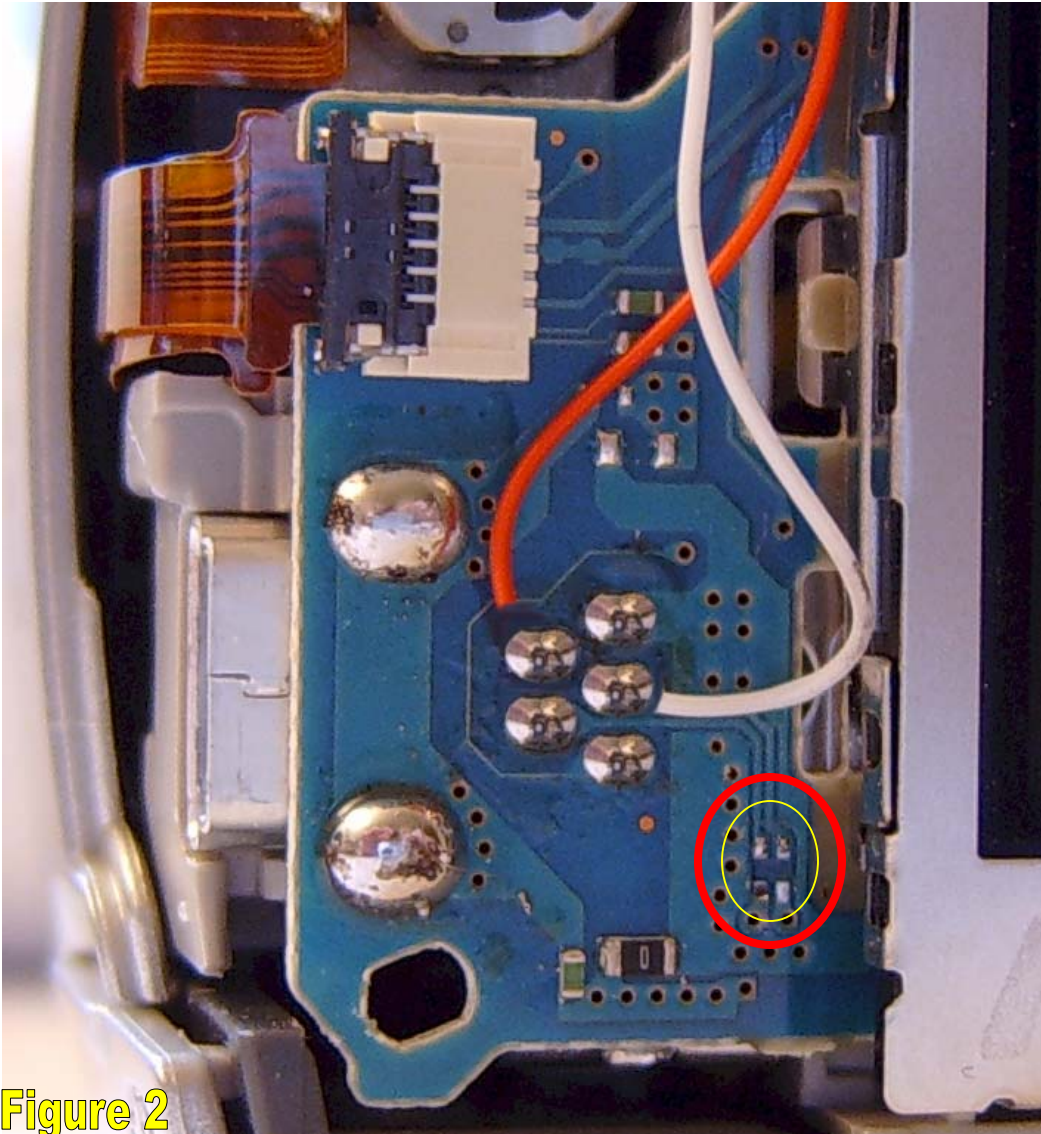
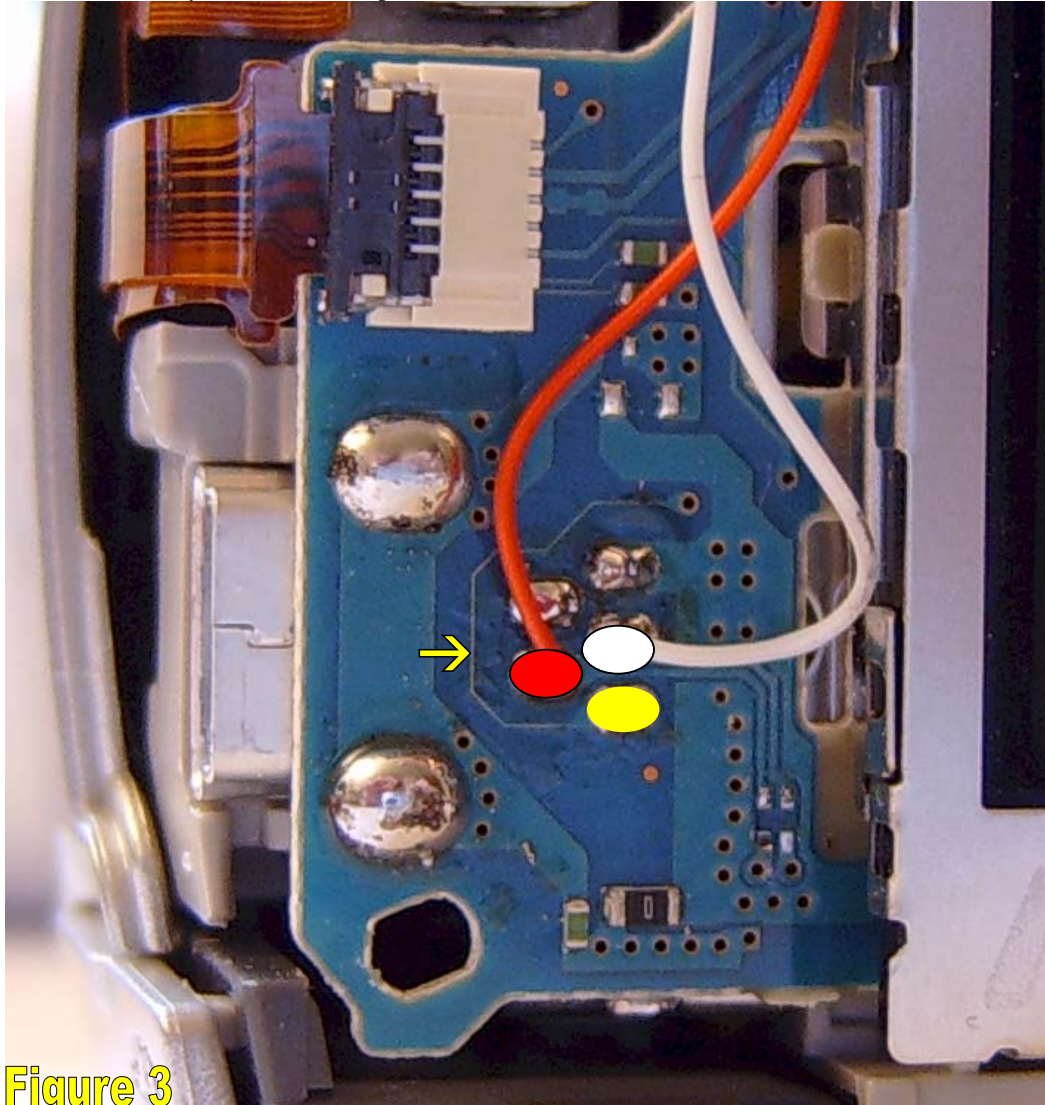


Figure 2

4. Removing this component now gives us the two free connectors we need, which are isolated from the camera electronics.

5. The Pin with the red circle is where I connected my **Refresh (Power)** wire.
6. The Pin with the White circle is where I connected my **Shutter** wire.

These are the only two connection points I tested.



**Figure 3**

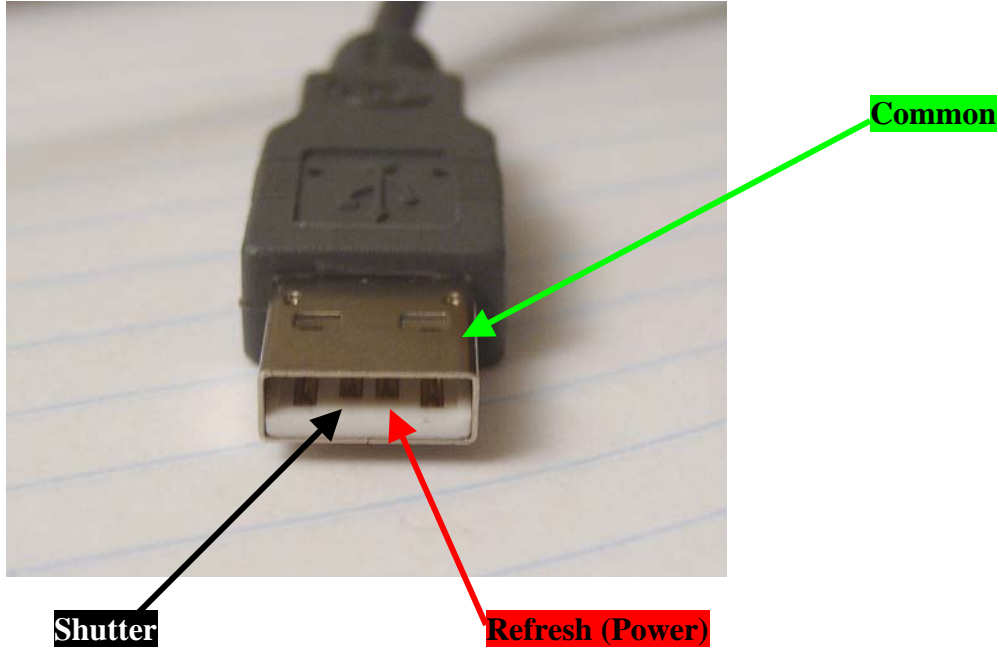
**UPDATED: Added step 7 on 18Jan2007**

7. The pin with the Yellow circle is where I connected my **Lens Cover Sensor** wire. This is only if you have performed the **Yetinme Quick Start Mod**. Using a razor blade just cut the trace where the yellow arrow is to isolate the pin.

[Click here to view more information about the Yetinme Quick Start Mod.](#)

That's it.

## Now the Cable End (Opposite end of camera plug)



## Camera Internal USB Connector

