

# YetiCam LLC

[www.YetiCam.com](http://www.YetiCam.com)

## Modification document for the Sony DSC-W5

Please note that making modifications to this camera will void all warranties to the camera and could damage the camera beyond repair. YetiCam LLC is not responsible for any injuries or damage created by use of this document.

1. Remove the camera batteries and memory stick.
2. Remove screw A from the camera noting the length of the screw.



3. Remove screws B & C from the camera noting length of the screws.



# YetiCam LLC

[www.YetiCam.com](http://www.YetiCam.com)

4. Remove screw D from the camera noting length of the screw.



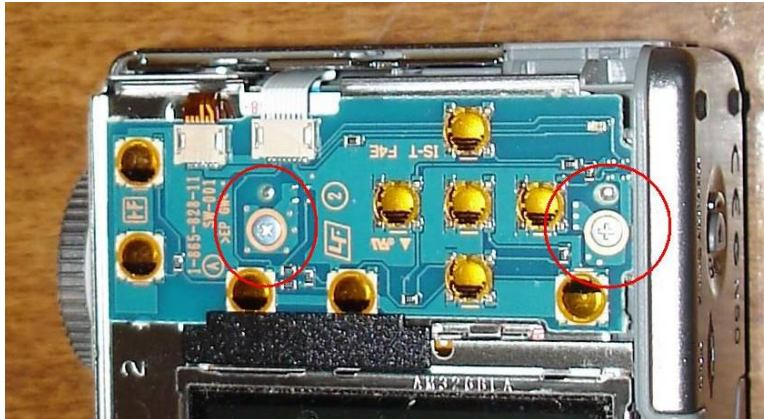
5. Carefully remove the back cover from the front by prying the two sides apart.



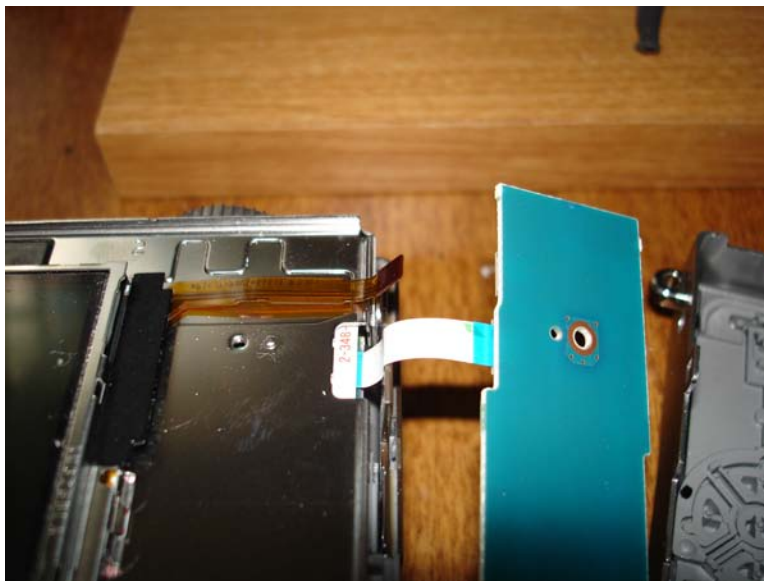
# YetiCam LLC

[www.YetiCam.com](http://www.YetiCam.com)

6. Remove the screws E & F from the camera noting the length of screws.



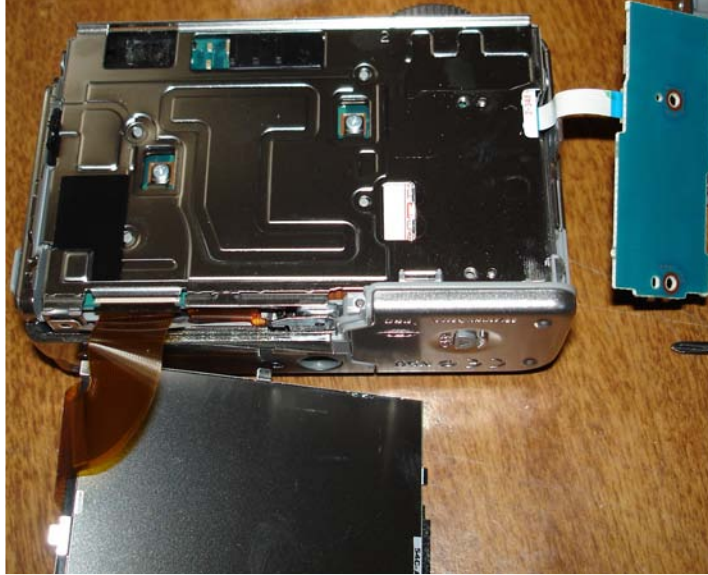
7. Swing the back button control board out of the way carefully so the ribbon cables do not tear. Disconnect the ribbon cable from the back button control board. This ribbon connects the LCD to the control board.



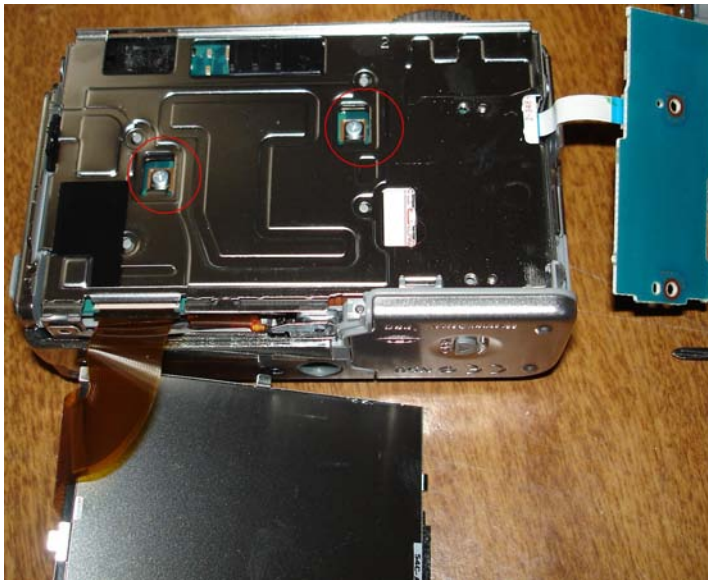
# YetiCam LLC

[www.YetiCam.com](http://www.YetiCam.com)

8. Swing the LCD display down and out of the way being careful to not tear the ribbon cable. If necessary, the large ribbon cable from the LCD can be removed from the back of the camera allowing the LCD to be removed. This step is not necessary but may be convenient for some.



9. Remove the screws G & H from the camera noting the length of the screws.



# YetiCam LLC

[www.YetiCam.com](http://www.YetiCam.com)

10. Remove the silver metal cover plate.



11. Remove the black plastic cover plate.



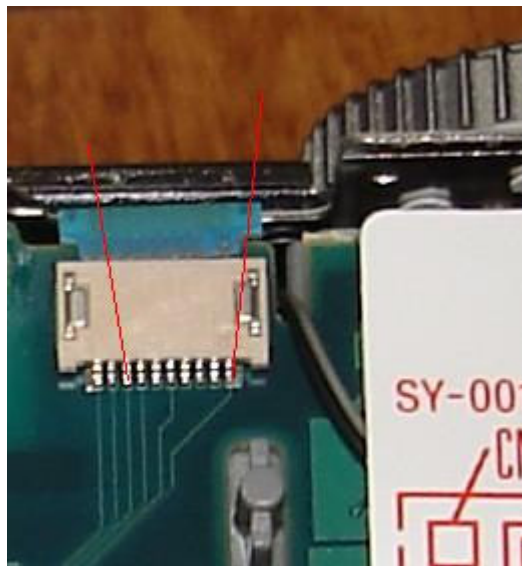
# YetiCam LLC

[www.YetiCam.com](http://www.YetiCam.com)

12. Take caution to not touch these two solder points or you will be shocked by the Flash charge capacitor!



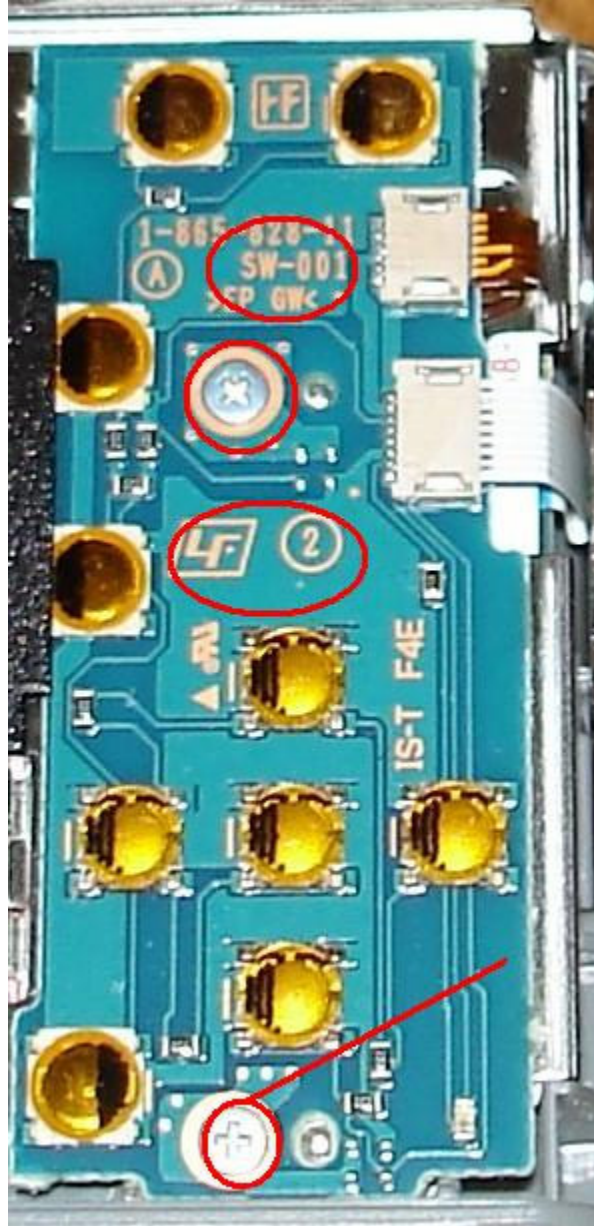
13. Solder the control board's Power (red line on the right) and Shutter (red line on the left) wires where shown in the picture. The second pin from the right has no connection to it and solder can be bridged between the Camera's power wire (Pin 1) and Pin 2. The shutter wire needs to be soldered to the third pin in from the left or to the trace leading away from the connector. **This is an extremely difficult connection to make and should only be attempted by people experienced in fine soldering!**



# YetiCam LLC

[www.YetiCam.com](http://www.YetiCam.com)

14. Install the black plastic cover, the silver metal cover and screws, the LCD, the ribbon cable connecting the LCD to the back button control board, the back button control board and screws.
15. Clean a spot off (several marked) to solder the Camera's common connection to.



16. Route wires to outside of camera and replace the camera's back cover and screws.

# *YetiCam LLC*

[www.YetiCam.com](http://www.YetiCam.com)

17. The camera should be wired to the YetiCam board with the following connections:
  - a. Camera's Power wire should go to the Red Wire on the 4 conductor cable (the P pin).
  - b. Camera's Shutter wire should go to the Green Wire on the 4 conductor cable (the S pin).
  - c. Camera's common wire should go to either the White or Black wire on the 4 conductor cable (the SC or PC pin).
  - d. The solder jumpers on the back of the control board should have B soldered to C and E soldered to F.